



# foliot furniture



2024

Finish Chart

Healthcare





# Pulls



Silver Half Moon ADA compliant

CODE	LENGTH	FINISH
PG1-104	4½"	Nickel



Black Half Moon ADA compliant

CODE	LENGTH	FINISH
PG1-110	4½"	Black Nickel



C-Handle ADA compliant

CODE	LENGTH	FINISH
PG1-163	4½"	Brushed Nickel



Short Tubular ADA compliant

CODE	LENGTH	FINISH
PG1-142	5¼"	Brushed Nickel



Black Short Tubular ADA compliant

CODE	LENGTH	FINISH
PG1-152	5¼"	Black Nickel



Foliot 2.0 Silver

CODE	LENGTH	FINISH
PG1-165	4½"	Brushed Nickel



Foliot 2.0 Black

CODE	LENGTH	FINISH
PG1-167	4½"	Black Nickel



# Laminates



Bianco    Maritime Dune    Fawn Cypress    Maple

Bianco	F008
Maritime Dune	F269
Fawn Cypress	F249
Maple	F037



French Pear    Modern Walnut    Shadow Oak

French Pear	F258
Modern Walnut	F165
Shadow Oak	F762

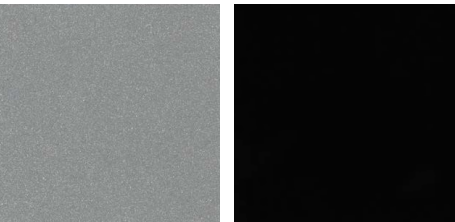
# Woods



Maple    Modern Walnut

Maple	F037
Modern Walnut	F165

# Metals



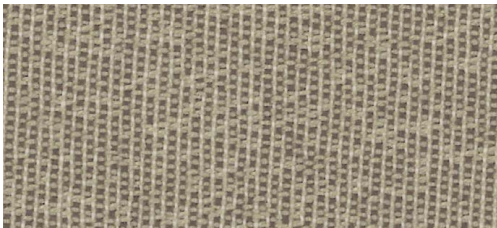
Aria grey    Black

Aria grey	M010-ST
Black	M003-ST



# Nebbia

Grade 4



Mole



Black



Charcoal



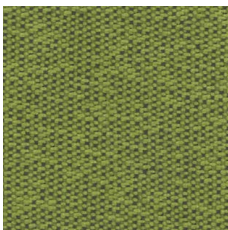
Slate



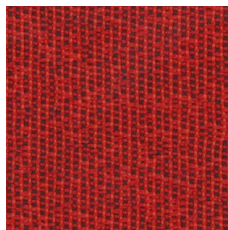
Navy



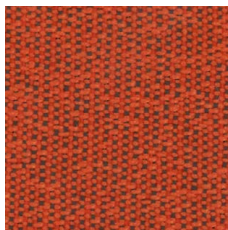
Teal



Apple



Cherry



Tangerine



Fiber	100% Polyester
Finish	Nanotex
Backing	Acrylic
Abrasion	130,000 Double Rubs
Cleaning code	WS
Flammability	California Technical Bulletin 117-2013 & NFPA 260
Pilling resistance	Class 3
Slippage resistance	105 lb
Breaking strength	350 lb
Fastness to light	40 hrs Class 5
Fastness to rubbing	Wet : 5 / Dry : 4.5



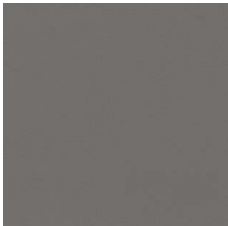


# Faux Leather - Freeport

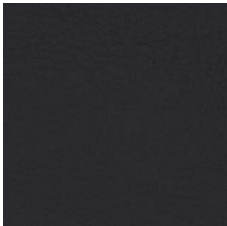
Grade 4



Coconut



Greystone



Black



Bark



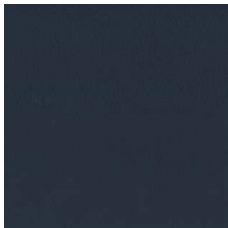
Cocoa



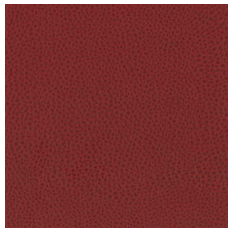
Nugget



Coal



Blueberry



Red Rock

Fiber	100% Polyurethane
Abrasion	200,000 Double Rubs
Cleaning code	W
Flammability	California Technical Bulletin 117-2013 & NFPA 260 Class 1



# Linen

Grade 4



Cashmere

Fiber	100% Vinyl
Backing	100% Brushed Polyester Knit
Abrasion	110,000 Double Rubs
Cleaning code	WS
Flammability	California Technical Bulletin 117-2013 & NFPA 260 Class 1

# Desert Oak



Desert Oak

Fiber	100% Polyurethane
Finish	Nanotex
Abrasion	200,000 Double Rubs
Cleaning code	WS
Flammability	California Technical Bulletin 117-2013 & NFPA 260



# Sherpa

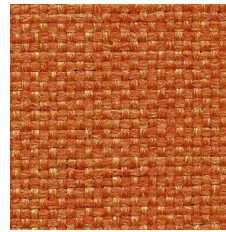
Grade 6



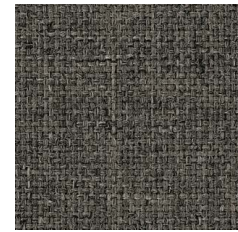
Academy Blue



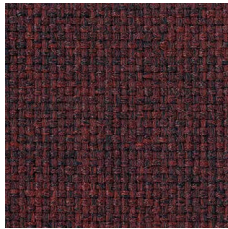
Amber



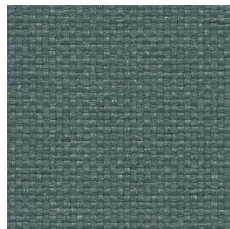
Snappy



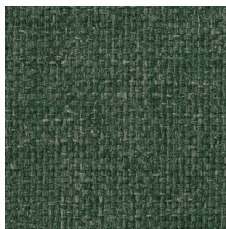
Grey Heather



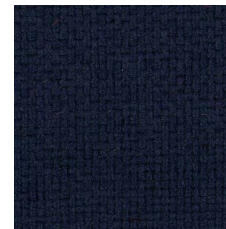
Newport



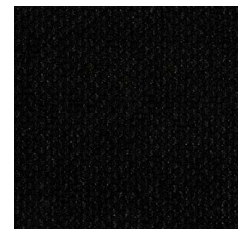
Teal



Jade

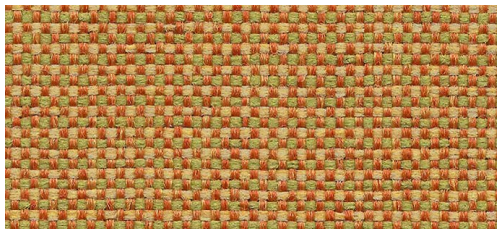


Navy

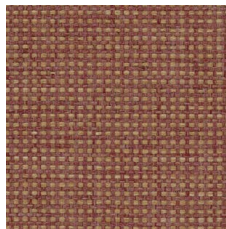


Black

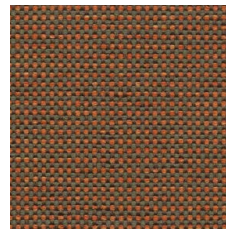
# Shire



Paradise



Farm house



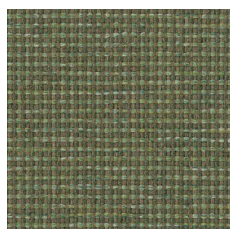
Serengeti



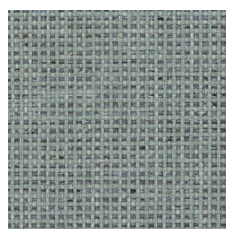
Black Cherry



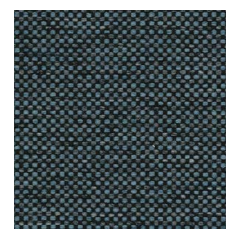
Concrete



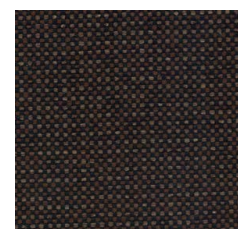
Patina



Aqua Tint



Blue Jay



Espresso

Fiber	100% Marquésa Lana
Finish & backing	Acrylic
Abrasion	250,000 Double Rubs
Cleaning code	WS
Repeat	None (Pattern is woven up the roll and suitable for railloading)
Flammability	California Technical Bulletin 117-2013 / CS-191-53, Class 1 / BIFMA X5.7-1991 / UFAC, Class 1





# Calvin

Grade 6



Dolphin



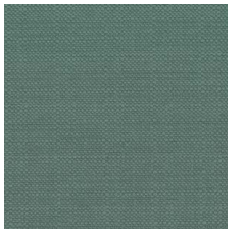
Chocolate



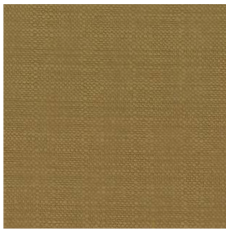
Black



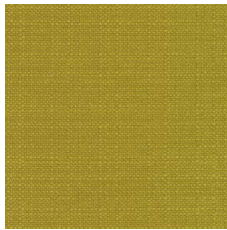
Azure



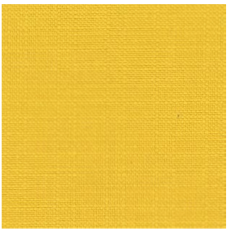
Laguna



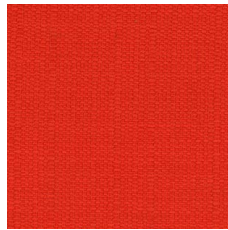
Tigereye



Wheat Grass



Sunny



Atomic

Fiber	100% Polyester
Abrasion	50,000 Double Rubs
Cleaning code	W
Flammability	California Technical Bulletin 117-2013





Green by Momentum Textiles

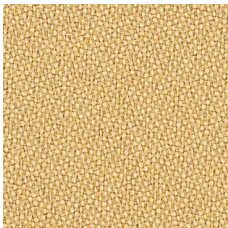
MOMENTUM  
TEXTILES

Origin

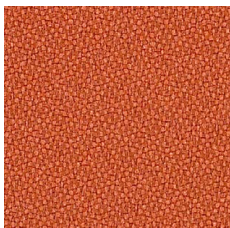
Grade 8



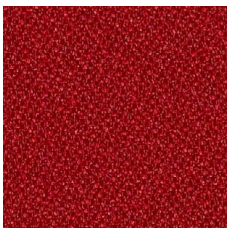
Eureka



Dune



Clay



Fez



Indigo



Fir



Basalt

Fiber	100% Post Consumer Recycled Polyester
Backing	Acrylic
Abrasion	282,000 Double Rubs
Cleaning code	WS
Flammability	California Technical Bulletin 117-2013 / UFAC Class 1 / NFPA 260 Class 1
Reduced environmental impact	GREENGUARD Gold Certified / NSF 336 Compliant

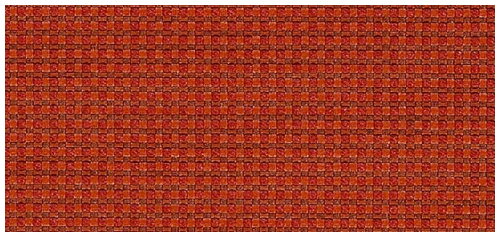


Green by Momentum Textiles

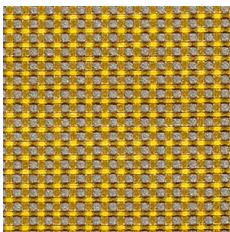
MOMENTUM  
TEXTILES

Grid

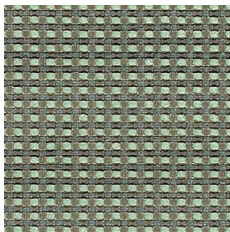
Grade 8



Scarlet



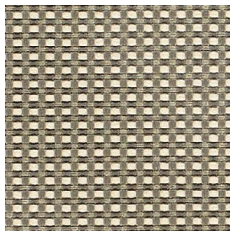
Sunbeam



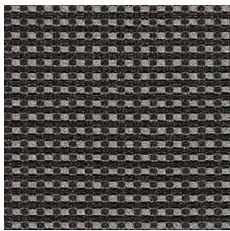
Glacier



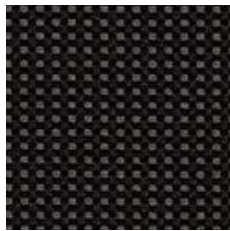
Indigo



Chrome



Flint



Jet

Fiber	64% Repreve® Post Consumer Recycled Polyester; 36% Polyester
Backing	Acrylic
Abrasion	160,000 Double Rubs
Cleaning code	WS
Repeat	1/8" V, 1/8" H
Flammability	California Technical Bulletin 117-2013 / UFAC Class 1 / NFPA 260 Class 1
Reduced environmental impact	GREENGUARD Gold Certified / NSF 336 Compliant



Green by Momentum Textiles

MOMENTUM  
T E X T I L E S

Fuse

Grade 8



Pristine



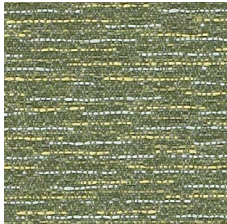
Saffron



Ginger



Iris



Cress



Pepper



Azurean

Fiber	65% Post Industrial Recycled Polyester; 35% Post Consumer Recycled Polyester
Backing	Latex
Abrasion	100,000 Double Rubs
Cleaning code	WS
Flammability	California Technical Bulletin 117-2013 / UFAC Class 1 / NFPA 260 Class 1
Reduced environmental impact	GREENGUARD Gold Certified / NSF 336 Compliant / Recycled fiber content



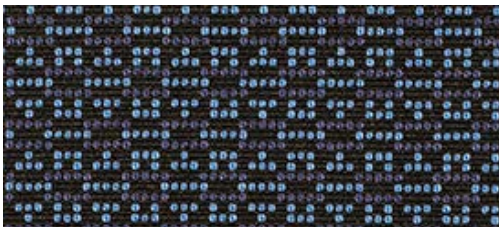


Green by Momentum Textiles

MOMENTUM  
TEXTILES

Bobby

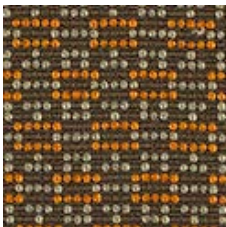
Grade 8



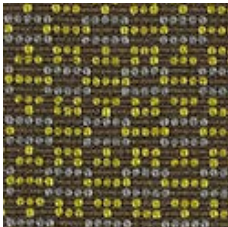
Iris



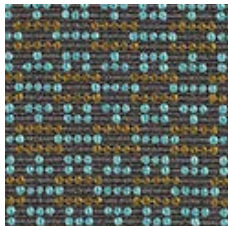
Lemon



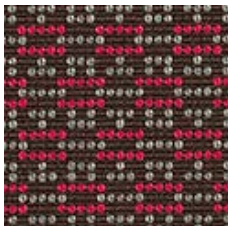
Glow



Moss



Aqua



Fuchsia



Anchor

Fiber	68% Repreve® Post Consumer Recycled Polyester; 32% Polyester
Backing	Acrylic
Abrasion	150,000 Double Rubs
Cleaning code	WS
Repeat	7/8" V, 1/2" H
Flammability	California Technical Bulletin 117-2013 / UFAC Class 1
Reduced environmental impact	GREENGUARD Gold Certified / NSF 336 Compliant / Recycled Fiber Content



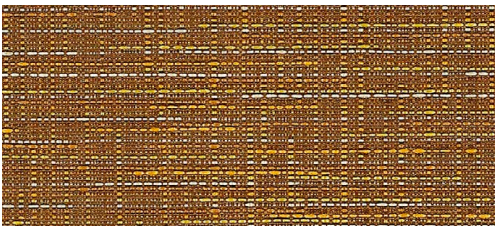


Green by Momentum Textiles

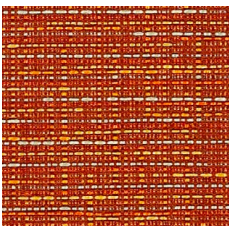
MOMENTUM  
TEXTILES

Guild

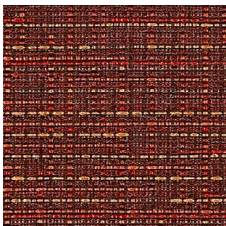
Grade 10



Amber



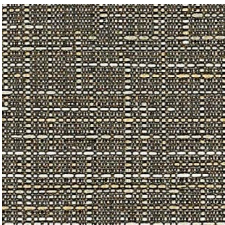
Mandarin



Garnet



Ink



Dover



London



Shale

Fiber	71% Post Consumer Recycled Polyester; 29% Polyester
Backing	Latex
Abrasion	90,000 Double Rubs
Cleaning code	WS
Flammability	California Technical Bulletin 117-2013 / UFAC Class 1 / NFPA 260 Class 1
Reduced environmental impact	GREENGUARD Gold Certified / NSF 336 Compliant / Recycled Fiber Content



Green by Momentum Textiles

MOMENTUM  
TEXTILES

Graph

Grade 10



Alpine



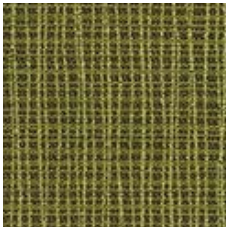
Ruby



Tidal



Wave



Parrot



Poppy



Alloy



Coal



Anchor

Fiber	75% Repreve® Post Consumer Recycled Polyester; 25% Polyester
Backing	Acrylic
Abrasion	170,000 Double Rubs
Cleaning code	W
Repeat	3-3/8" V, 7-1/2" H
Flammability	California Technical Bulletin 117-2013 / UFAC Class 1 / NFPA 260 Class 1
Reduced environmental impact	GREENGUARD Gold Certified / NSF 336 Compliant / Recycled Fiber Content



Green by Momentum Textiles

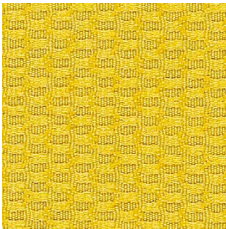
MOMENTUM  
TEXTILES

Widget

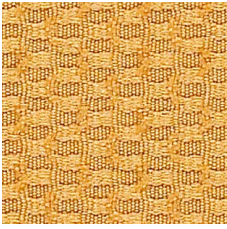
Grade 10



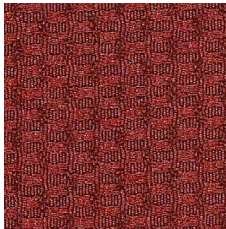
Cyprus



Anton



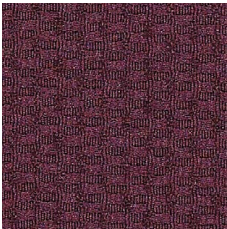
Saffron



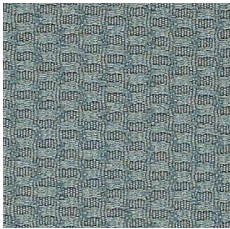
Bantam



Fog



Currant



Bristol



Baja



Onyx

Fiber	83% Post Consumer Recycled Polyester; 17% Post Industrial Recycled Polyester
Abrasion	100,000 Double Rubs
Cleaning code	WS
Repeat	1/2" V, 1/4" H
Flammability	California Technical Bulletin 117-2013, UFAC Class 1, NFPA 260 Class 1
Reduced environmental impact	Recycled Fiber Content, Rapidly Renewable Fiber Content, GREENGUARD Gold Certified, NSF 336 Compliant



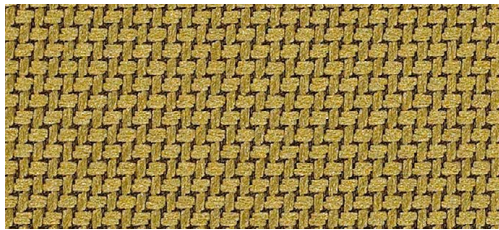


Green by Momentum Textiles

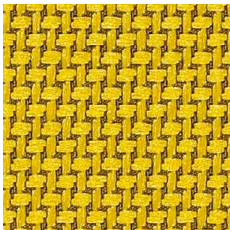
MOMENTUM  
T E X T I L E S

Tradition

Grade 12



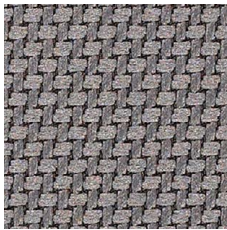
Frond



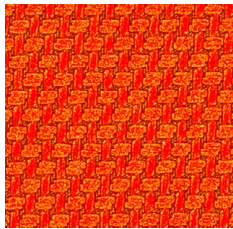
Sprout



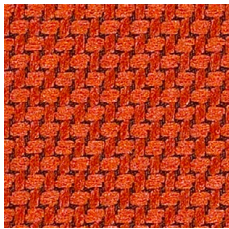
Soy



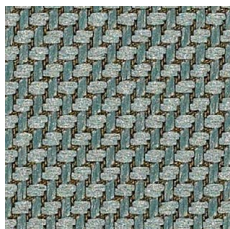
Weld



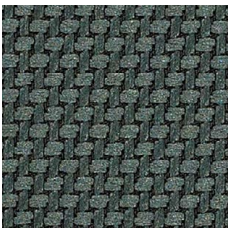
Tango



Spiced



Isle



Hedge



Hidden

Fiber	72% Post Consumer Recycled Polyester; 28% Polyester
Finish & Backing	C-Zero® / Acrylic
Abrasion	200,000 Double Rubs
Cleaning code	WS
Repeat	1/8" V, 1/8" H
Flammability	California Technical Bulletin 117-2013 / UFAC Class 1 / NFPA 260 Class 1 / ASTM E84
Reduced environmental impact	Recycled Fiber Content / GREENGUARD Gold Certified / NSF 336 Compliant



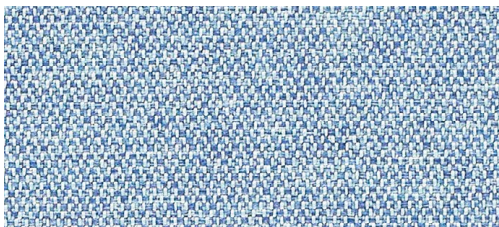


Green by Momentum Textiles

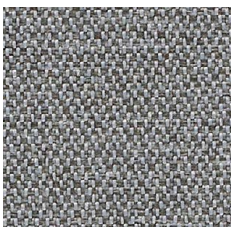
MOMENTUM  
TEXTILES

Infinity

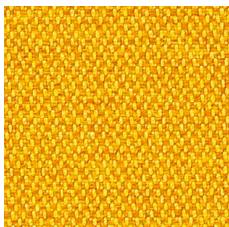
Grade 12



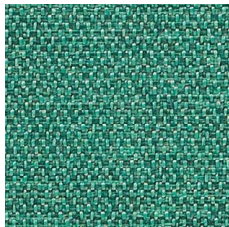
Aster



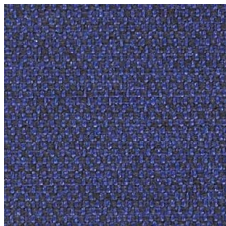
Pewter



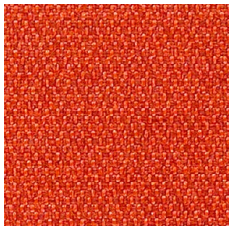
Maize



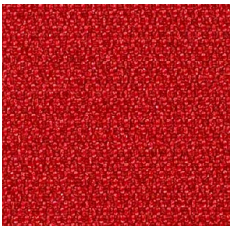
Atoll



Beyond



Papaya



Macintosh



Sable



Java

Fiber	74% Post Consumer Recycled Polyester; 26% Polyester
Finish & Backing	C-Zero® / Acrylic
Abrasion	200,000 Double rubs
Cleaning code	WS
Repeat	1/8" V, 5/8" H
Flammability	California Technical Bulletin 117-2013 / UFAC Class 1 / NFPA 260 Class 1 / ASTM E84
Reduced environmental impact	Recycled Fiber Content / GREENGUARD Gold Certified / NSF 336 Compliant



Green by Momentum Textiles

MOMENTUM  
TEXTILES

Syntax

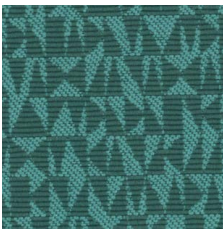
Grade 12



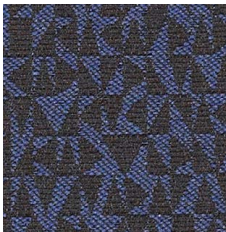
Shale



Camel



Turquoise



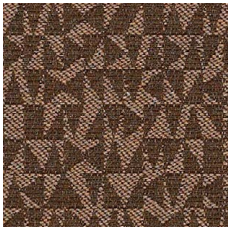
Hudson



Nectar



Pewter



Cocoa



Violet



Asphalt

Fiber	50% Post Consumer Recycled Polyester; 50% Polyester
Backing	Acrylic
Abrasion	115,000 Double rubs
Cleaning code	WS
Repeat	6-1/4" V, 7-1/8" H
Flammability	California Technical Bulletin 117-2013 / UFAC Class 1 / NFPA 260 Class 1
Reduced environmental impact	Recycled Fiber Content / GREENGUARD Gold Certified / NSF 336 Compliant



Our locations

## Made in North America

CANADA

### **Montreal**

Manufacturing  
and assembly

### **Mirabel**

Specialized panel  
production

USA

### **Las Vegas**

Manufacturing  
and assembly

1 (800) 545-5575  
[sales@foliot.com](mailto:sales@foliot.com)

[foliot.com](https://www.foliot.com)