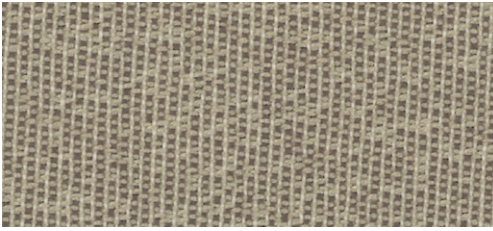


# Nebbia

# Grade 4



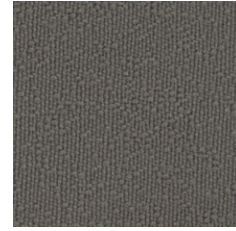
Mole



Black



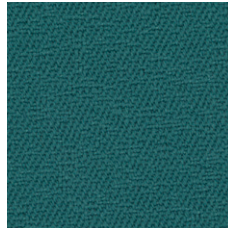
Charcoal



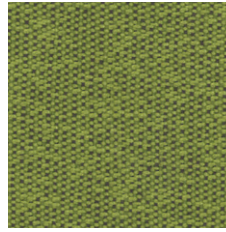
Slate



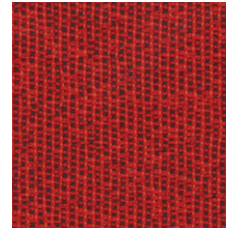
Navy



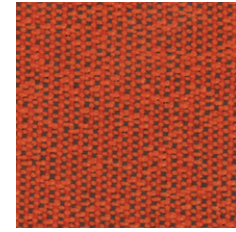
Teal



Apple



Cherry



Tangerine

NANotex™

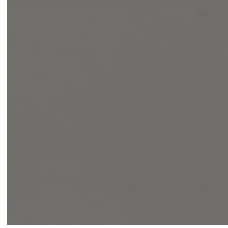
Fiber	100% Polyester
Finish	Nanotex
Backing	Acrylic
Abrasion	130,000 Double Rubs
Cleaning code	WS
Flammability	California Technical Bulletin 117-2013 & NFPA 260
Pilling resistance	Class 3
Slippage resistance	105 lb
Breaking strength	350 lb
Fastness to light	40 hrs Class 5
Fastness to rubbing	Wet: 5 / Dry: 4.5

# Faux Leather - Freeport

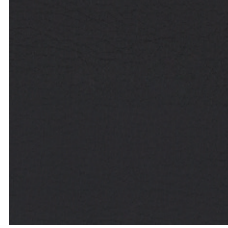
# Grade 4



Coconut



Greystone



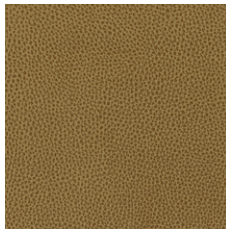
Black



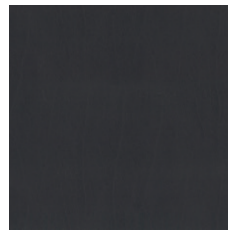
Bark



Cocoa



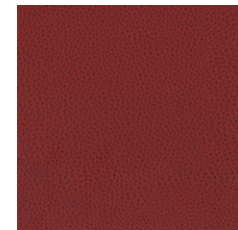
Nugget



Coal



Blueberry

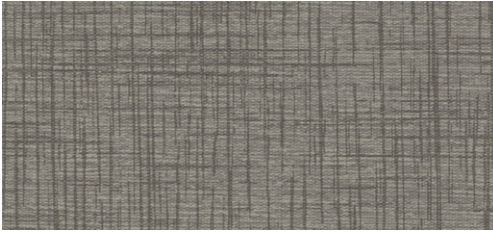


Red Rock

Fiber	100% Polyurethane
Abrasion	200,000 Double Rubs
Cleaning code	W
Flammability	California Technical Bulletin 117-2013 & NFPA 260 Class 1

# Linen

# Grade 4



Fiber	100% Vinyl
Backing	100% Brushed Polyester Knit
Abrasion	110,000 Double Rubs
Cleaning code	WS
Flammability	California Technical Bulletin 117-2013 & NFPA 260 Class 1

Cashmere

# Desert Oak



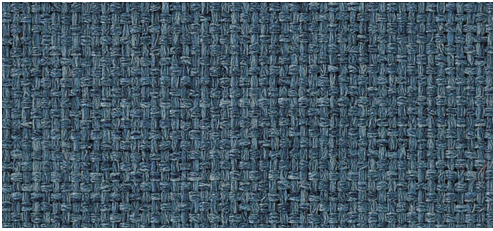
Fiber	100% Polyurethane
Finish	Nanotex
Abrasion	200,000 Double Rubs
Cleaning code	WS
Flammability	California Technical Bulletin 117-2013 & NFPA 260

Desert Oak

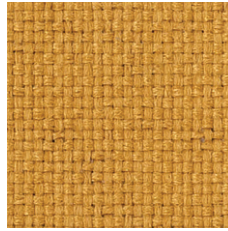


## Sherpa

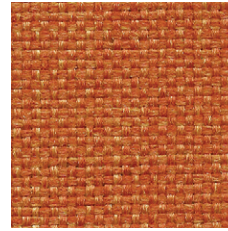
## Grade 6



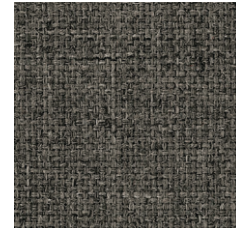
Academy Blue



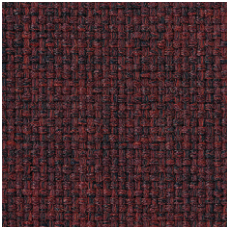
Amber



Snappy



Grey Heather



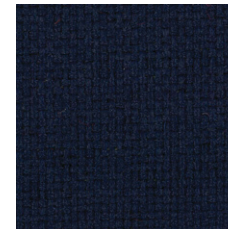
Newport



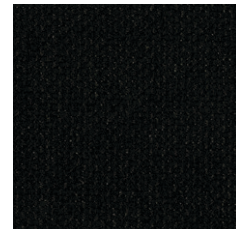
Teal



Jade

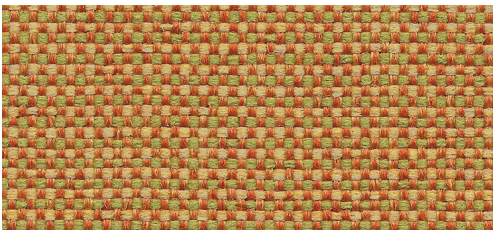


Navy

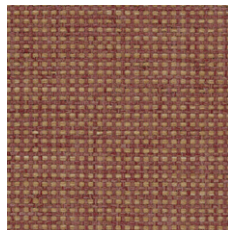


Black

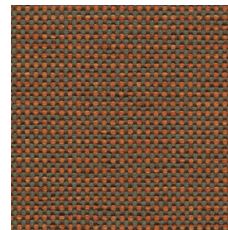
## Shire



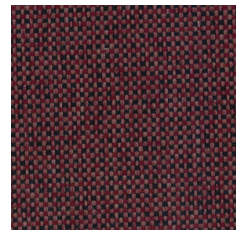
Paradise



Farm house



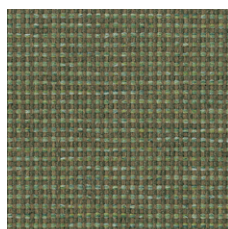
Serengeti



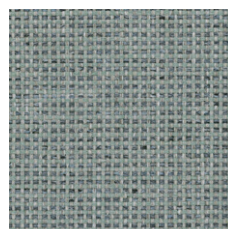
Black Cherry



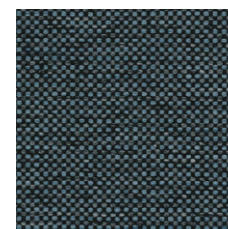
Concrete



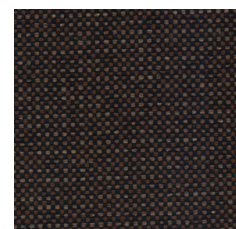
Patina



Aqua Tint



Blue Jay



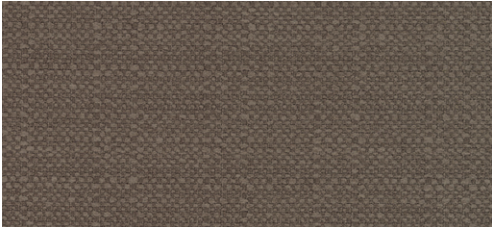
Espresso

Fiber	100% Marquésa Lana
Finish & backing	Acrylic
Abrasion	250,000 double rubs
Cleaning code	WS
Repeat	None (Pattern is woven up the roll and suitable for railloading)
Flammability	California Technical Bulletin 117-2013 / CS-191-53, Class 1 / BIFMA X5.7-1991 / UFAC, Class 1



# Calvin

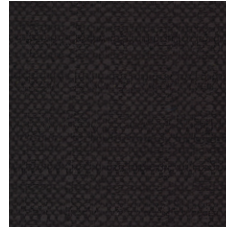
# Grade 6



Dolphin



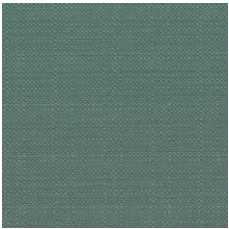
Chocolate



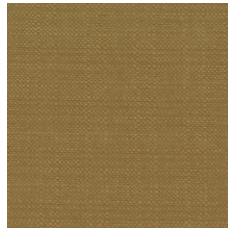
Black



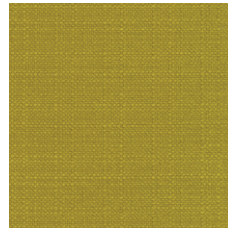
Azure



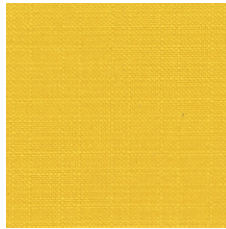
Laguna



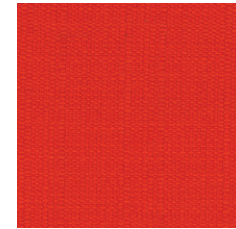
Tigereye



Wheat Grass



Sunny



Atomic

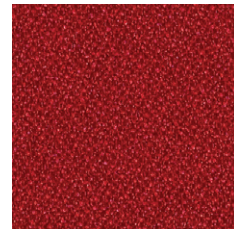
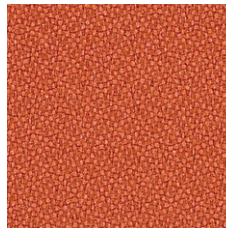
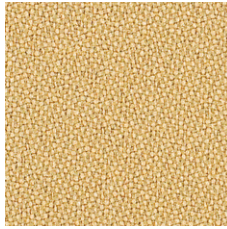
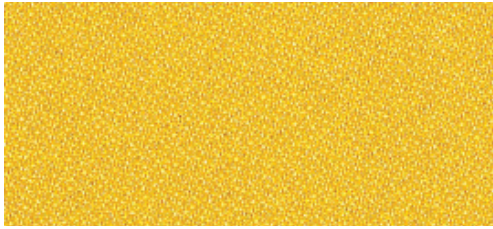
Fiber	100% Polyester
Abrasion	50,000 Double rubs
Cleaning code	W
Flammability	California Technical Bulletin 117-2013

# Green by Momentum Textiles

MOMENTUM  
TEXTILES

## Origin

## Grade 8

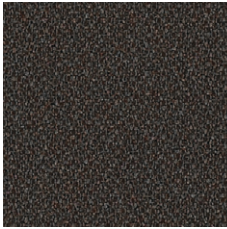
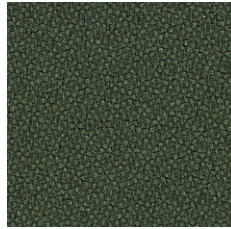


Eureka

Dune

Clay

Fez



Indigo

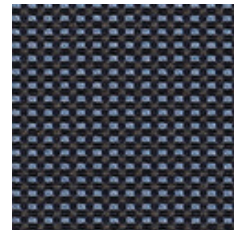
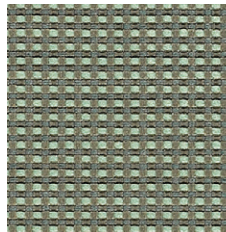
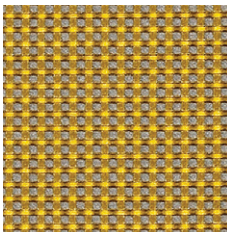
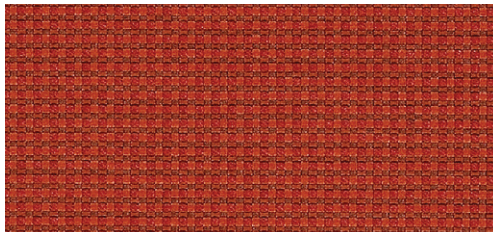
Fir

Basalt

Fiber	100% Post Consumer Recycled Polyester
Backing	Acrylic
Abrasion	282,000 Double Rubs
Cleaning code	WS
Flammability	California Technical Bulletin 117-2013 / UFAC Class 1 / NFPA 260 Class 1
Reduced environmental impact	GREENGUARD Gold Certified / NSF 336 Compliant

## Grid

## Grade 8

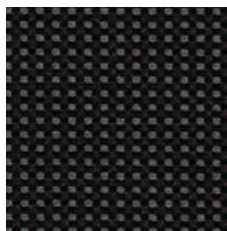
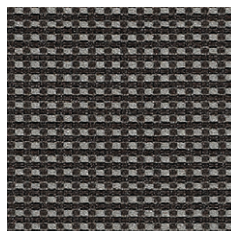
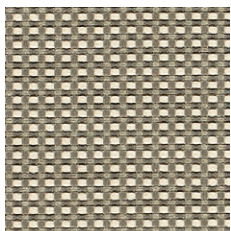


Scarlet

Sunbeam

Glacier

Indigo



Chrome

Flint

Jet

Fiber	64% Repreve® Post Consumer Recycled Polyester; 36% Polyester
Backing	Acrylic
Abrasion	160,000 Double Rubs
Cleaning code	WS
Repeat	1/8" V, 1/8" H
Flammability	California Technical Bulletin 117-2013 / UFAC Class 1 / NFPA 260 Class 1
Reduced environmental impact	GREENGUARD Gold Certified / NSF 336 Compliant

Colors and patterns may differ from images. Fabric samples available upon request.

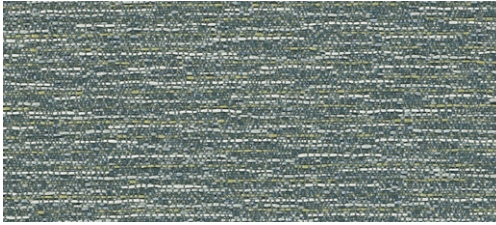
**foliot furniture**



# Green by Momentum Textiles

MOMENTUM  
TEXTILES

## Fuse



Pristine



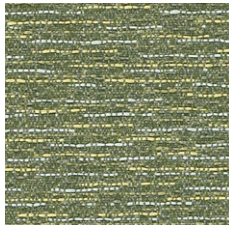
Saffron



Ginger



Iris



Cress



Pepper

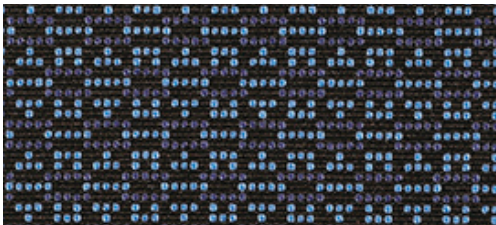


Azurean

Fiber	65% Post Industrial Recycled Polyester; 35% Post Consumer Recycled Polyester
Backing	Latex
Abrasion	100,000 Double Rubs
Cleaning code	WS
Flammability	California Technical Bulletin 117-2013 / UFAC Class 1 / NFPA 260 Class 1
Reduced environmental impact	GREENGUARD Gold Certified / NSF 336 Compliant / Recycled fiber content

## Grade 8

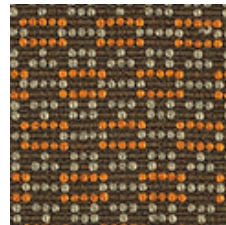
## Bobby



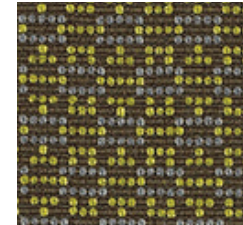
Iris



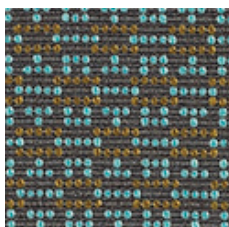
Lemon



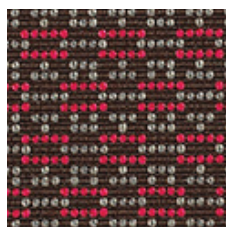
Glow



Moss



Aqua



Fuchsia



Anchor

Fiber	68% Repreve® Post Consumer Recycled Polyester; 32% Polyester
Backing	Acrylic
Abrasion	150,000 Double Rubs
Cleaning code	WS
Repeat	7/8" V, 1/2" H
Flammability	California Technical Bulletin 117-2013 / UFAC Class 1
Reduced environmental impact	GREENGUARD Gold Certified / NSF 336 Compliant / Recycled Fiber Content

## Grade 8

Colors and patterns may differ from images. Fabric samples available upon request.

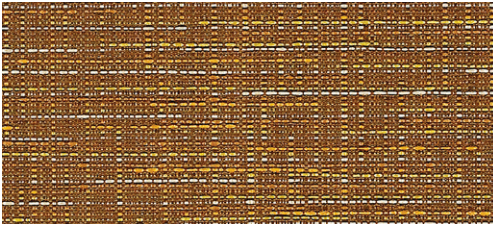
**foliot furniture**



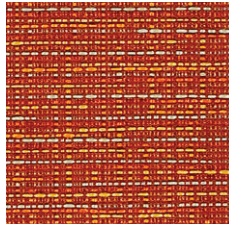
# Green by Momentum Textiles

MOMENTUM  
TEXTILES

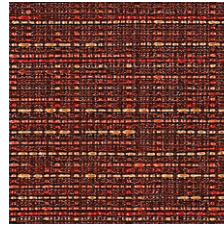
## Guild



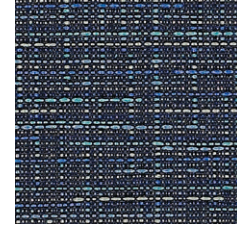
Amber



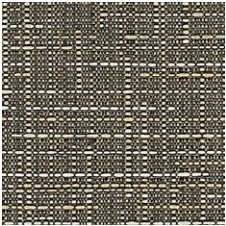
Mandarin



Garnet



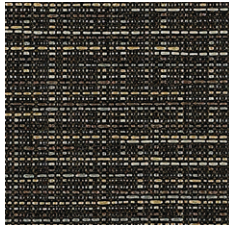
Ink



Dover



London



Shale

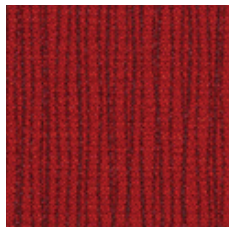
Fiber	71% Post Consumer Recycled Polyester; 29% Polyester
Backing	Latex
Abrasion	90,000 Double Rubs
Cleaning code	WS
Flammability	California Technical Bulletin 117-2013 / UFAC Class 1 / NFPA 260 Class 1
Reduced environmental impact	GREENGUARD Gold Certified / NSF 336 Compliant / Recycled Fiber Content

## Grade 10

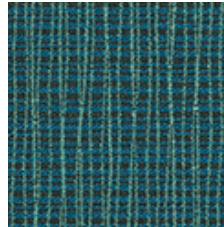
## Graph



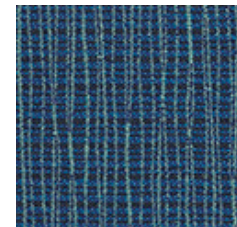
Alpine



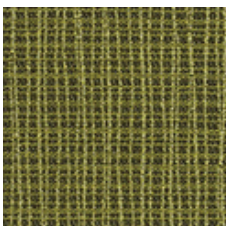
Ruby



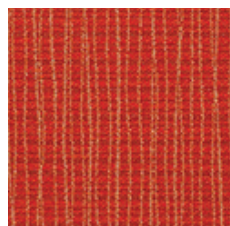
Tidal



Wave



Parrot



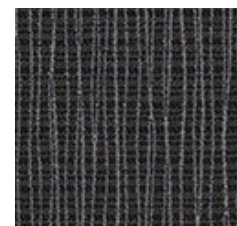
Poppy



Alloy



Coal



Anchor

Fiber	75% Repreve® Post Consumer Recycled Polyester; 25% Polyester
Backing	Acrylic
Abrasion	170,000 Double rubs
Cleaning code	W
Repeat	3-3/8" V, 7-1/2" H
Flammability	California Technical Bulletin 117-2013 / UFAC Class 1 / NFPA 260 Class 1
Reduced environmental impact	GREENGUARD Gold Certified / NSF 336 Compliant / Recycled Fiber Content

Colors and patterns may differ from images. Fabric samples available upon request.

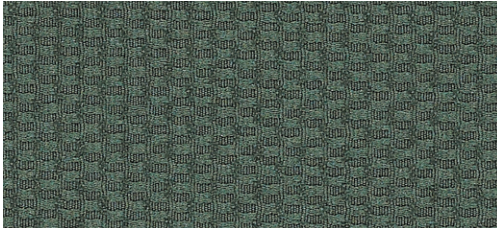
**foliot furniture**



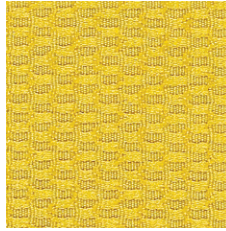
# Green by Momentum Textiles

MOMENTUM  
TEXTILES

## Widget



Cyprus



Anton



Saffron



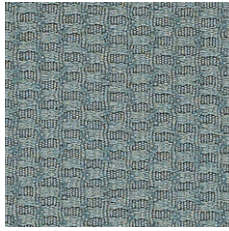
Bantam



Fog



Currant



Bristol



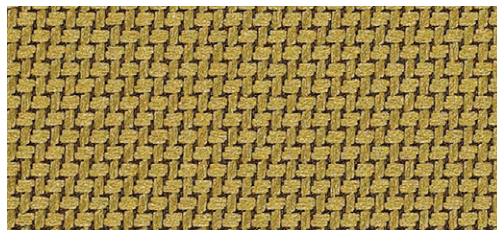
Baja



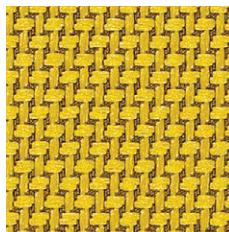
Onyx

Fiber	83% Post Consumer Recycled Polyester; 17% Post Industrial Recycled Polyester
Abrasion	100,000 Double rubs
Cleaning code	WS
Repeat	1/2" V, 1/4" H
Flammability	California Technical Bulletin 117-2013, UFAC Class 1, NFPA 260 Class 1
Reduced environmental impact	Recycled Fiber Content, Rapidly Renewable Fiber Content, GREENGUARD Gold Certified, NSF 336 Compliant

## Tradition



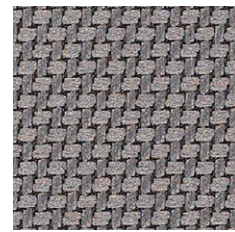
Frond



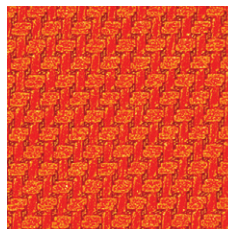
Sprout



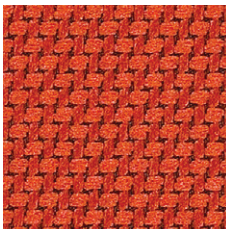
Soy



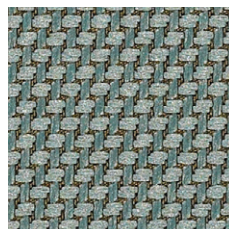
Weld



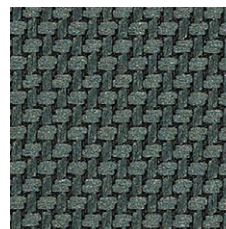
Tango



Spiced



Isle



Hedge



Hidden

Fiber	72% Post Consumer Recycled Polyester; 28% Polyester
Finish & Backing	C-Zero® / Acrylic
Abrasion	200,000 Double rubs
Cleaning code	WS
Repeat	1/8" V, 1/8" H
Flammability	California Technical Bulletin 117-2013 / UFAC Class 1 / NFPA 260 Class 1 / ASTM E84
Reduced environmental impact	Recycled Fiber Content / GREENGUARD Gold Certified / NSF 336 Compliant

Colors and patterns may differ from images. Fabric samples available upon request.

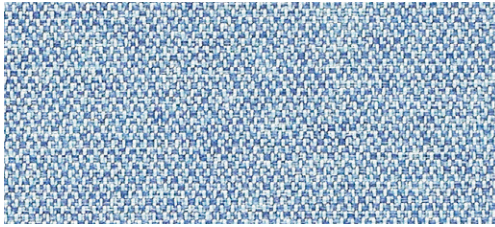
**foliot furniture**



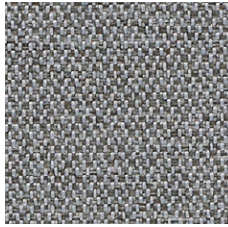
# Green by Momentum Textiles

MOMENTUM  
TEXTILES

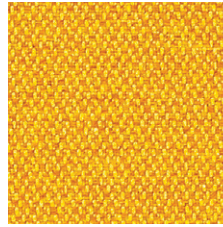
## Infinity



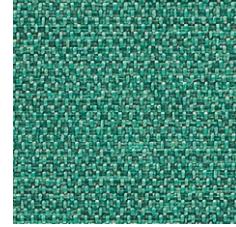
Aster



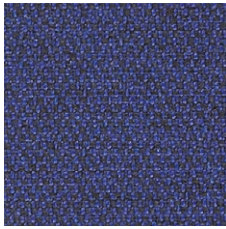
Pewter



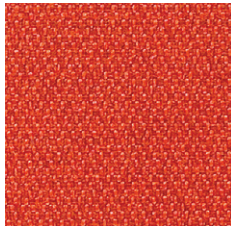
Maize



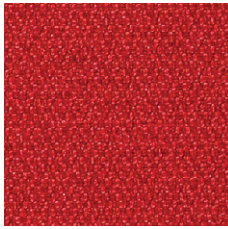
Atoll



Beyond



Papaya



Macintosh



Sable



Java

Fiber	74% Post Consumer Recycled Polyester; 26% Polyester
Finish & backing	C-Zero® / Acrylic
Abrasion	200,000 Double rubs
Cleaning code	WS
Repeat	1/8" V, 5/8" H
Flammability	California Technical Bulletin 117-2013 / UFAC Class 1 / NFPA 260 Class 1 / ASTM E84
Reduced environmental impact	Recycled Fiber Content / GREENGUARD Gold Certified / NSF 336 Compliant

## Grade 12

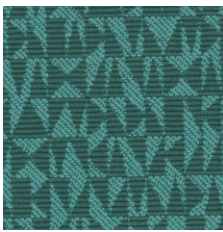
## Syntax



Shale



Camel



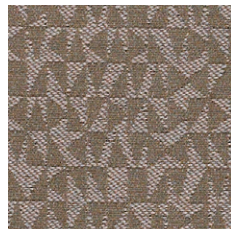
Turquoise



Hudson



Nectar



Pewter



Cocoa



Violet



Asphalt

Fiber	50% Post Consumer Recycled Polyester; 50% Polyester
Backing	Acrylic
Abrasion	115,000 Double rubs
Cleaning code	WS
Repeat	6-1/4" V, 7-1/8" H
Flammability	California Technical Bulletin 117-2013 / UFAC Class 1 / NFPA 260 Class 1
Reduced environmental impact	Recycled Fiber Content / GREENGUARD Gold Certified / NSF 336 Compliant

Colors and patterns may differ from images. Fabric samples available upon request.

**foliot furniture**



# Manufacturing Facilities

Last Updated : December 15, 2021

## Las Vegas

7000 Placid Street  
Las Vegas, Nevada 89119  
United States

## Montreal

721 Boulevard Roland-Godard  
Saint-Jerome, Quebec J7Y 4C1  
Canada

Contact us today  
and start creating your  
very own project.

1 (800) 545-5575  
housing@foliot.com  
foliot.com

**foliot**  
**furniture**