

*f*  
**foliot** Collection



Hospitality.

foliot.com

# Finishes, Pulls & Textiles



# Casegood Finishes

Matching edgbanding available.



F008



F232



F294



F174



F249



F235



F179



F189



F282



F258



F187



F280



F250



F165



F234



F157



F223



F257



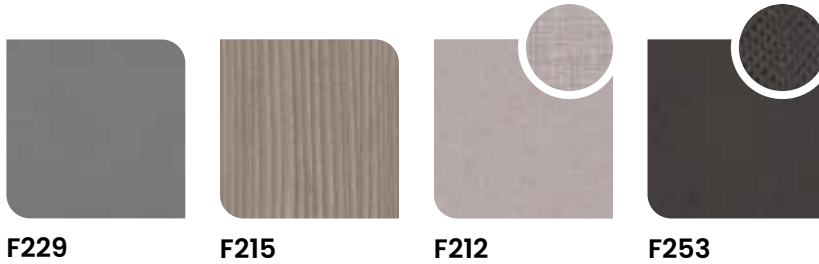
F762



F003

## Accent Finishes

---



- TFL suitable for all surfaces; HPL recommended for tops.
- Use casegood finishes to select coordinating edgebanding.

## Metal Finishes

---



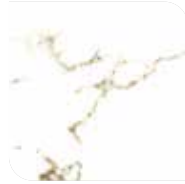
Custom finishes available, subject to minimum order quantities and made-to-order timelines.

## Stone Finishes

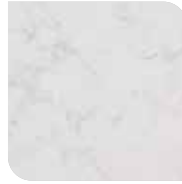
Custom finishes are available, subject to minimum order quantities and made-to-order lead times.



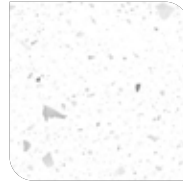
**ST-002**



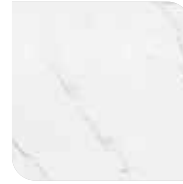
**ST-040**



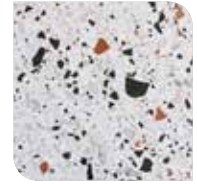
**ST-015**



**ST-039**



**ST-023**



**ST-029**



**ST-027**



**ST-028**



**DESIGNER  
SELECTION**

<b>RESISTANCE</b>	<ul style="list-style-type: none"> <li>• Stain-resistant</li> <li>• Scratch-resistant</li> <li>• Impact-resistant</li> </ul>	<p>Custom finishes are available.</p> <p>•</p> <p>Subject to minimum order quantities and made-to-order lead times.</p>
<b>POROSITY</b>	Non-porous - does not require sealing	
<b>MAINTENANCE</b>	Low-maintenance - clean with mild soap and water	
<b>HYGIENE</b>	Hygienic surface - prevents bacteria and mold	

 ADA-compliant



**PGI-170**

Length: 10 9/16"

Finish: Grey Powder Coat



**PGI-172**

Length: 15 5/8"

Finish: Grey Powder Coat



**PGI-171**

Length: 10 9/16"

Finish: Black Powder Coat



**PGI-173**

Length: 15 5/8"

Finish: Black Powder Coat



**PGI-142**

Length: 5 1/4"

Finish: Brushed Nickel



**PGI-152**

Length: 5 1/4"

Finish: Black Nickel



**PGI-104**

Length: 4 1/2"

Finish: Nickel



**PGI-110**

Length: 4 1/2"

Finish: Black Nickel



**PGI-180**

Length: 7 3/4"

Finish: Grey Powder Coat



**PGI-181**

Length: 7 3/4"

Finish: Taupe Powder Coat



**PGI-113**

Length: 6 1/4"

Finish: Satin Nickel



**PGI-111**

Length: 13"

Finish: Satin Nickel

 ADA-compliant

---



**PGI-130**

Length: 7 11/16"

Finish: Brushed Nickel



**PGI-141**

Length: 5 3/8"

Finish: Brass Powder Coat



**PGI-121**

Length: 14 1/4"

Finish: Black Powder Coat

Classic configuration

---



**PGI-116**

Length: 11 3/4"

Finish: Aluminum



**PGI-114**

Length: 15 3/4"

Finish: Aluminum

## Hamitage

Certain edgework available.



NAVY



ASH



GREY



BLACK



OATMEAL



CARIBBEAN



RED

<b>FIBER</b>	100% Polyester	<ul style="list-style-type: none"> <li>• Customer's own fabric selection (COM) is available.</li> <li>• Inquire with your Foliot sales manager regarding process.</li> <li>• In-stock option</li> </ul>
<b>ABRASION</b>	130,000 Double Rubs	
<b>CLEANING CODE</b>	S	
<b>FLAMMABILITY</b>	<ul style="list-style-type: none"> <li>• California Technical Bulletin 117-2013</li> <li>• UFAC Class 1</li> <li>• NFPA 260 Class 1</li> </ul>	

Colors and patterns may differ from images. Samples available upon request.

## Zenith

Grade 4



BLUE



OXFORD BLUE



DOVE



GREY



AGATE



EBONY



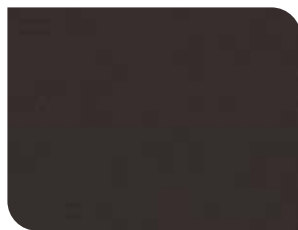
ECRU



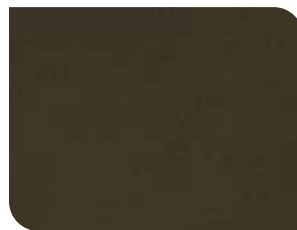
NUDE



GARNET



WALNUT



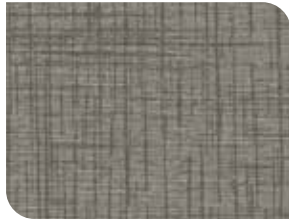
DESERT PALM

<b>FIBER</b>	65% Polyurethane 25% Polyester 10% Viscose	<ul style="list-style-type: none"> <li>• Customer's own fabric selection (COM) is available.</li> <li>• Inquire with your Foliot sales manager regarding process.</li> <li>• In-stock option</li> </ul>
<b>ABRASION</b>	130,000 Double Rubs	
<b>CLEANING CODE</b>	W	
<b>FLAMMABILITY</b>	California Technical Bulletin 117-2013 UFAC Class 1 NFPA 260 Class 1	

Colors and patterns may differ from images. Samples available upon request.

## Other Textiles

Grade 4



LINEN CASHMERE

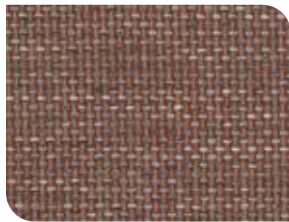
<b>FIBER</b>	100% Vinyl
<b>BACKING</b>	100% Brushed Polyester Knit
<b>ABRASION</b>	110,000 Double Rubs
<b>CLEANING CODE</b>	WS
<b>FLAMMABILITY</b>	<ul style="list-style-type: none"> <li>• California Technical Bulletin 117-2013</li> <li>• NFPA 260 Class 1</li> </ul>



DESERT OAK

NANotex™

<b>FIBER</b>	100% Polyurethane
<b>BACKING</b>	Nanotex
<b>ABRASION</b>	200,000 Double Rubs
<b>CLEANING CODE</b>	WS
<b>FLAMMABILITY</b>	<ul style="list-style-type: none"> <li>• California Technical Bulletin 117-2013</li> <li>• NFPA 260 Class 1</li> </ul>



TWEEDY

<b>FIBER</b>	100% Polyester
<b>ABRASION</b>	100,000 Double Rubs
<b>CLEANING CODE</b>	S
<b>FLAMMABILITY</b>	California Technical Bulletin 117-2013



ASG ROLE TEXTURE

<b>FIBER</b>	100% Polyester
<b>ABRASION</b>	50,000 Double Rubs
<b>CLEANING CODE</b>	S
<b>FLAMMABILITY</b>	California Technical Bulletin 117-2013



D-4185 FEATHER

<b>FIBER</b>	100% Olefin
<b>ABRASION</b>	60,000 Double Rubs
<b>CLEANING CODE</b>	WS
<b>FLAMMABILITY</b>	California Technical Bulletin 117-2013



BAYOU

<b>FIBER</b>	100% Polyester
<b>ABRASION</b>	80,000 Double Rubs
<b>CLEANING CODE</b>	S
<b>FLAMMABILITY</b>	California Technical Bulletin 117-2013

Colors and patterns may differ from images. Samples available upon request.

## Other Textiles

Grade 4



**PORT OF SPAIN**

<b>FIBER</b>	87% Polyester, 13% Acrylic
<b>ABRASION</b>	60,000 Double Rubs
<b>CLEANING CODE</b>	S
<b>FLAMMABILITY</b>	California Technical Bulletin 117-2013



**FLORA ROSE**

<b>FIBER</b>	81% Polyester, 19% Acrylic
<b>ABRASION</b>	65,000 Double Rubs
<b>CLEANING CODE</b>	S
<b>FLAMMABILITY</b>	California Technical Bulletin 117-2013



**SKY CHEVRON**

<b>FIBER</b>	100% Polyester
<b>ABRASION</b>	50,000 Double Rubs
<b>CLEANING CODE</b>	S
<b>FLAMMABILITY</b>	California Technical Bulletin 117-2013



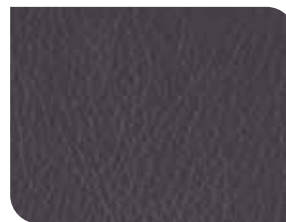
**COPPER**

<b>FIBER</b>	80% Polyurethane, 20% Polyester
<b>ABRASION</b>	30,000 Double Rubs
<b>CLEANING CODE</b>	S
<b>FLAMMABILITY</b>	California Technical Bulletin 117-2013



**STAR BRUSHED BRONZE**

<b>FIBER</b>	80% Polyurethane, 20% Polyester
<b>ABRASION</b>	30,000 Double Rubs
<b>CLEANING CODE</b>	S
<b>FLAMMABILITY</b>	California Technical Bulletin 117-2013



**WISTERIA**

<b>FIBER</b>	78% Polyvinyl, 6% Polyurethane, 16% Polyester
<b>ABRASION</b>	30,000 Single Rubs
<b>CLEANING CODE</b>	W
<b>FLAMMABILITY</b>	California Technical Bulletin 117-2013



**LEISURE**

Colors and patterns may differ from images. Samples available upon request.

Grommets

---



BLACK



WHITE

Outlets

---



BLACK



WHITE

Specifications

<b>INPUT VOLTAGE</b>	120V AC
<b>TOTAL OUTPUT</b>	15A
<b>USB OUTPUT</b>	1 USB-A & 1 USB-C
<b>SURGE/OVERCURRENT PROTECTION</b>	15A protection

<b>CORD LENGTH</b>	6 ft (1.83 m)
<b>WALL PLUG ORIENTATION</b>	90-degree space-saving plug
<b>SAFETY FEATURES</b>	<ul style="list-style-type: none"> <li>• Tamper-resistant</li> <li>• Spill-resistant</li> </ul>
<b>CERTIFICATIONS</b>	<ul style="list-style-type: none"> <li>• UL STD 962-A, UL STD 1449</li> <li>• CSA STD C22.2 No.308 &amp; No.8</li> </ul>

Colors and patterns may differ from images. Samples available upon request.

## Manufacturing Locations.

1 (800) 545-5575  
hospitality@foliot.com

### Canada

#### Saint-Jérôme

721 Boulevard Roland-Godard  
Saint-Jérôme, Quebec  
J7Y 4C1

#### Mirabel

12275 Rue Helen Bristol  
Mirabel, Quebec  
J7N 1C7

### USA

#### Las Vegas

7000 Placid Street  
Las Vegas, Nevada  
89119

