



Finishes, Pulls & Textiles



Casegood Finishes

Matching edgebanding available.



F008
BIANCO



F269
MARITIME DUNE



F249
SANDALWOOD



F037
MAPLE



F036
NORTHERN OAK



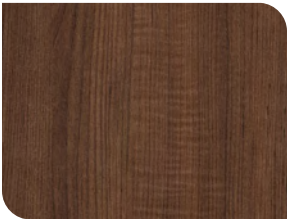
F038
NATURAL OAK



F258
RUSTIC WALNUT



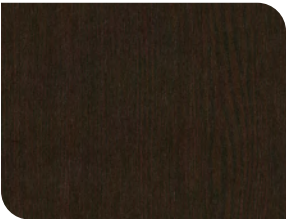
F068
WILD CHERRY



F165
MODERN WALNUT



F006
GRAPHITE



F762
SHADOW OAK

Accent Finishes

Accent finishes are available for door and drawer fronts. Casegood finishes may also be selected as accent finishes.



F290
OLIVE BRANCH



F291
GOLDEN ORCHARD



F012
ALUMINUM



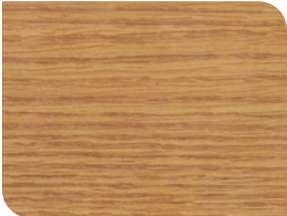
F003
PURE BLACK

Solid Wood Finishes

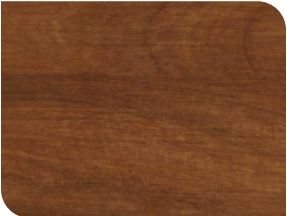
Available for solid wood components, such as bed ends, chairs and table legs.



F037
MAPLE



F038
NATURAL OAK



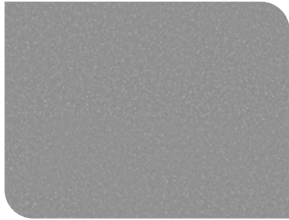
F068
WILD CHERRY



F165
MODERN WALNUT

Metal Finishes

Matching edgebanding available.



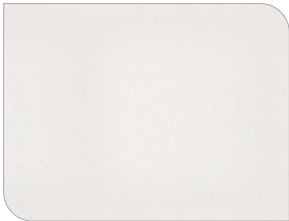
M010-ST
ARIA GREY



M003-ST
BLACK

Stone Finishes

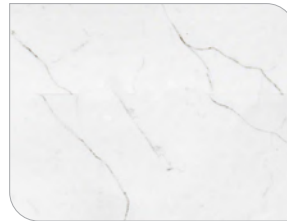
Available for vanity and kitchenette countertops.



ST-002



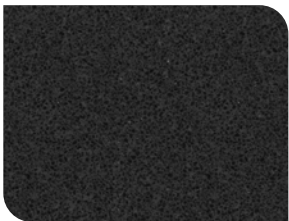
ST-015



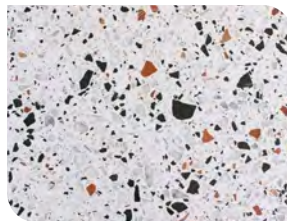
ST-023



ST-027



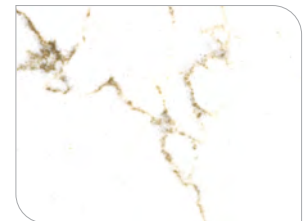
ST-028



ST-029



ST-039




ST-040

RESISTANCE	<ul style="list-style-type: none"> • Stain-resistant • Scratch-resistant • Impact-resistant
POROSITY	Non-porous - does not require sealing
MAINTENANCE	Low-maintenance - clean with mild soap and water
HYGIENE	Hygienic surface - prevents bacteria and mold

Colors and patterns may differ from images. Samples available upon request.

Grade 1

 • ADA-compliant



PG1-104 

SILVER HALF MOON

Length | 4.5"

Finish | Nickel



PG1-110 

BLACK HALF MOON

Length | 4.5"

Finish | Black Nickel



PG1-142 

SHORT TUBULAR

Length | 5.25"

Finish | Brushed Nickel



PG1-152 

BLACK SHORT TUBULAR

Length | 5.25"

Finish | Black Nickel



PG1-165

ARNO SILVER

Length | 4.5"

Finish | Brushed Nickel



PG1-167

ARNO BLACK

Length | 4.5"

Finish | Black Nickel




PG1-163 

C-HANDLE

Length | 4.13"

Finish | Brushed Nickel

Grade 2

 • ADA-compliant



PGI-105
SILVER FOLIOT

Length | 4.5"

Finish | Brushed Nickel



PGI-107
BLACK FOLIOT

Length | 4.5"

Finish | Black Nickel



PGI-144
WELD

Length | 3.94"

Finish | Brushed Nickel



PGI-115
REVA

Length | 19.5"

Finish | Aluminum



PGI-113
SHORT HOLM

Length | 6.25"

Finish | Satin Nickel



PGI-111
HOLM

Length | 13"

Finish | Satin Nickel



PGI-170
SILVER GATE

Length | 10.5"

Finish | Brushed Nickel



PGI-171
BLACK GATE

Length | 10.5"

Finish | Black Nickel



Heritage

Grade 4



NAVY



ASH



GREY



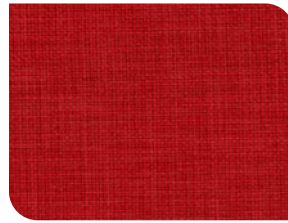
BLACK



OATMEAL



CARIBBEAN



RED

FIBER	100% Polyester		
ABRASION	130,000 Double Rubs		
CLEANING CODE	S		
FLAMMABILITY	• CA Bulletin 117-2013	• UFAC Class 1	• NFPA 260 Class 1

Colors and patterns may differ from images. Samples available upon request.

Zenith

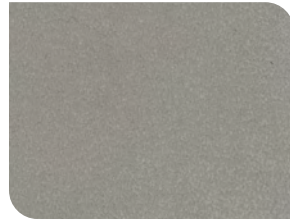
Grade 4



BLUE



OXFORD BLUE



DOVE



GREY



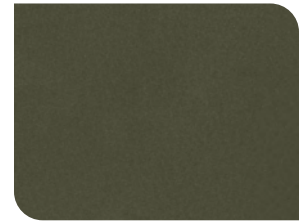
EBONY



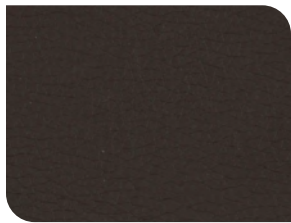
ECRU



GARNET



AGATE



WALNUT



DESERT PALM



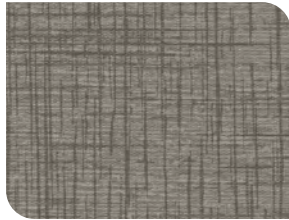
NUDE

FIBER	65% Polyurethane, 25% Polyester, 10% Viscose		
ABRASION	130,000 Double Rubs		
CLEANING CODE	W		
FLAMMABILITY	• CA Bulletin 117-2013	• UFAC Class 1	• NFPA 260 Class 1

Colors and patterns may differ from images. Samples available upon request.

Other Textiles

Grade 4



LINEN CASHMERE

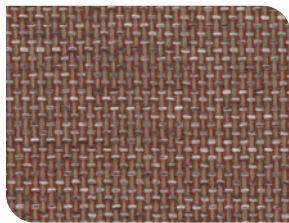
FIBER	100% Vinyl
BACKING	100% Brushed Polyester Knit
ABRASION	110,000 Double Rubs
CLEANING CODE	WS
FLAMMABILITY	<ul style="list-style-type: none"> • California Technical Bulletin 117-2013 • NFPA 260 Class 1



DESERT OAK

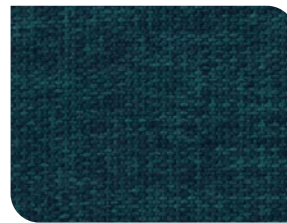
NANotex™

FIBER	100% Polyurethane
BACKING	Nanotex
ABRASION	200,000 Double Rubs
CLEANING CODE	WS
FLAMMABILITY	<ul style="list-style-type: none"> • California Technical Bulletin 117-2013 • NFPA 260 Class 1



TWEEDY

FIBER	100% Polyester
ABRASION	100,000 Double Rubs
CLEANING CODE	S
FLAMMABILITY	California Technical Bulletin 117-2013



ASG ROLE TEXTURE

FIBER	100% Polyester
ABRASION	50,000 Double Rubs
CLEANING CODE	S
FLAMMABILITY	California Technical Bulletin 117-2013



D-4185 FEATHER

FIBER	100% Olefin
ABRASION	60,000 Double Rubs
CLEANING CODE	WS
FLAMMABILITY	California Technical Bulletin 117-2013



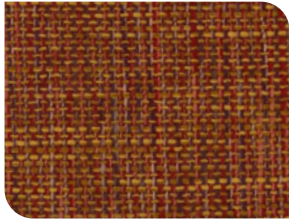
BAYOU

FIBER	100% Polyester
ABRASION	80,000 Double Rubs
CLEANING CODE	S
FLAMMABILITY	California Technical Bulletin 117-2013

Colors and patterns may differ from images. Samples available upon request.

Other Textiles

Grade 4



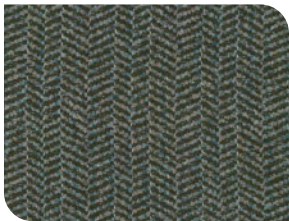
PORT OF SPAIN

FIBER	87% Polyester, 13% Acrylic
ABRASION	60,000 Double Rubs
CLEANING CODE	S
FLAMMABILITY	California Technical Bulletin 117-2013



FLORA ROSE

FIBER	81% Polyester, 19% Acrylic
ABRASION	65,000 Double Rubs
CLEANING CODE	S
FLAMMABILITY	California Technical Bulletin 117-2013



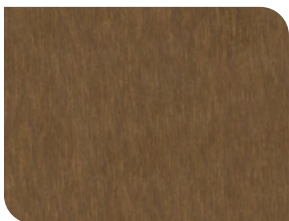
SKY CHEVRON

FIBER	100% Polyester
ABRASION	50,000 Double Rubs
CLEANING CODE	S
FLAMMABILITY	California Technical Bulletin 117-2013



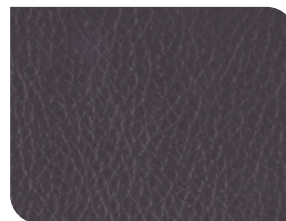
COPPER

FIBER	80% Polyurethane, 20% Polyester
ABRASION	30,000 Double Rubs
CLEANING CODE	S
FLAMMABILITY	California Technical Bulletin 117-2013



STAR BRUSHED BRONZE

FIBER	80% Polyurethane, 20% Polyester
ABRASION	30,000 Double Rubs
CLEANING CODE	S
FLAMMABILITY	California Technical Bulletin 117-2013



WISTERIA

FIBER	78% Polyvinyl, 6% Polyurethane, 16% Polyester
ABRASION	30,000 Single Rubs
CLEANING CODE	W
FLAMMABILITY	California Technical Bulletin 117-2013



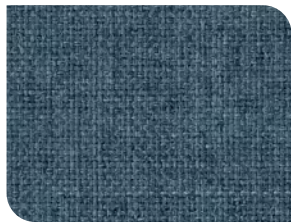
LEISURE

Colors and patterns may differ from images. Samples available upon request.

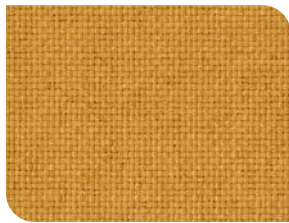
Sherpa

ABSECON

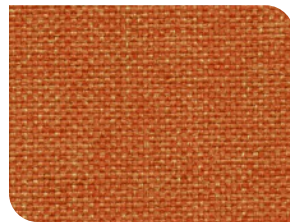
Grade 6



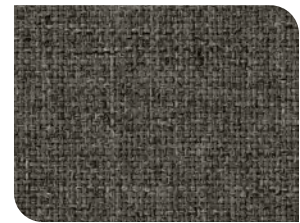
ACADEMY BLUE



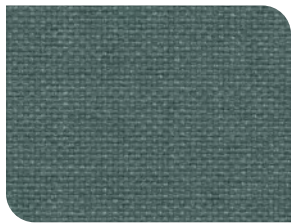
AMBER



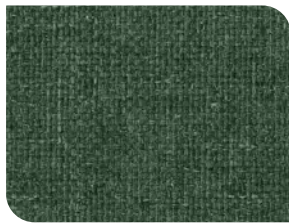
SNAPPY



GREY HEATHER



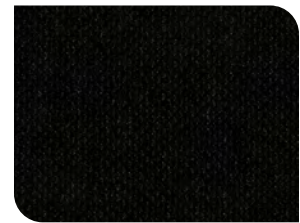
TEAL



JADE



NAVY



BLACK



NEWPORT

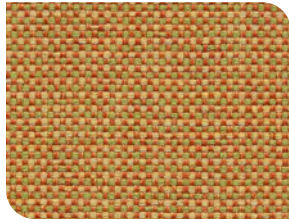
FIBER	100% Marquésa Lana			
FINISH & BACKING	Acrylic			
ABRASION	170,000 Double Rubs			
CLEANING CODE	WS			
REPEAT	None (<i>Pattern is woven up the roll and suitable for railloading</i>)			
FLAMMABILITY	• CA Bulletin 117-2013	• UFAC Class 1	• CS-191-53, Class 1	• BIFMA X5.7-1991

Colors and patterns may differ from images. Samples available upon request.

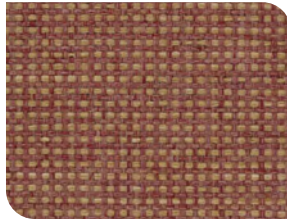
Shire

abSECON

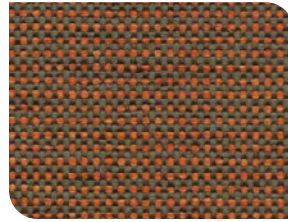
Grade 6



PARADISE



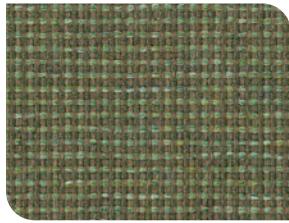
FARM HOUSE



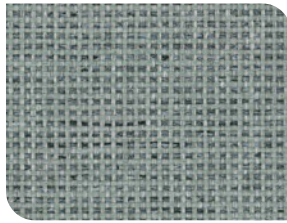
SERENGETI



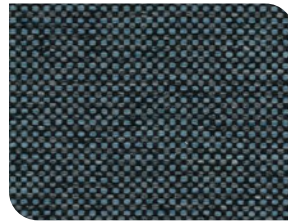
BLACK CHERRY



PATINA



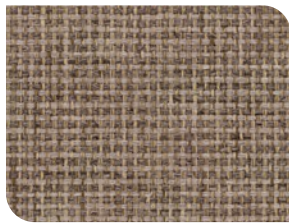
AQUA TINT



BLUE JAY



ESPRESSO



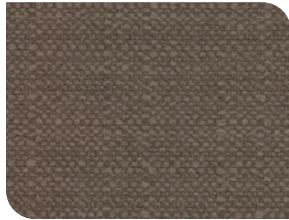
CONCRETE

FIBER	100% Marquésa Lana			
FINISH & BACKING	Acrylic			
ABRASION	250,000 Double Rubs			
CLEANING CODE	WS			
REPEAT	None (<i>Pattern is woven up the roll and suitable for railloading</i>)			
FLAMMABILITY	• CA Bulletin 117-2013	• UFAC Class 1	• CS-191-53, Class 1	• BIFMA X5.7-1991

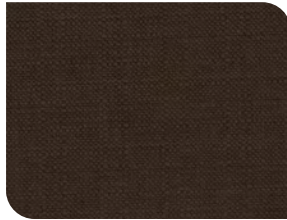
Colors and patterns may differ from images. Samples available upon request.

Calvin

Grade 6



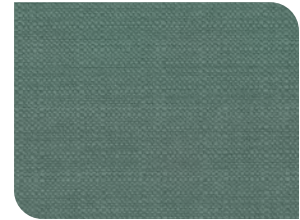
DOLPHIN



CHOCOLATE



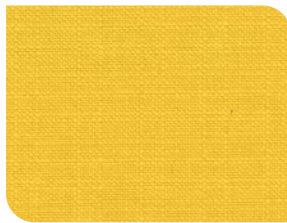
BLACK



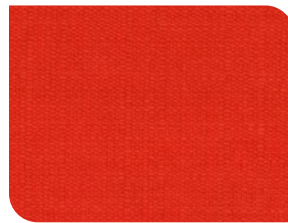
LAGUNA



WHEAT GRASS



SUNNY



ATOMIC

FIBER	100% Polyester
ABRASION	50,000 Double Rubs
CLEANING CODE	W
FLAMMABILITY	• CA Bulletin 117-2013

Colors and patterns may differ from images. Samples available upon request.

Dillon

Grade 6



BALTIC



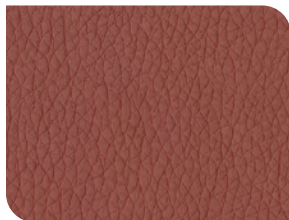
BLACK



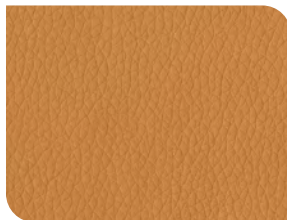
BORDEAUX



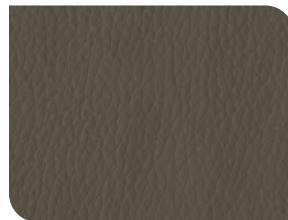
CHILLI



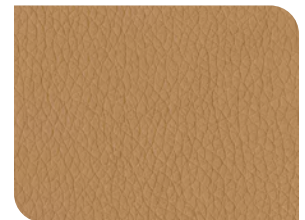
CORDOVAN



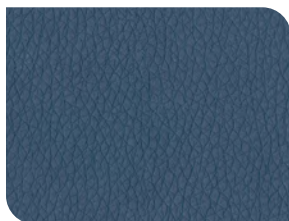
FIESTA



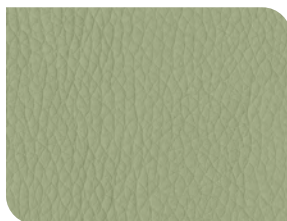
IRON



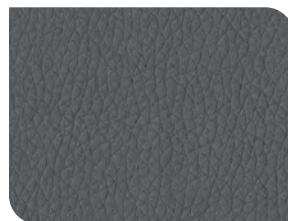
LUGGAGE



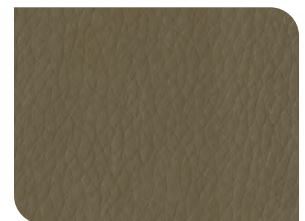
OCEAN



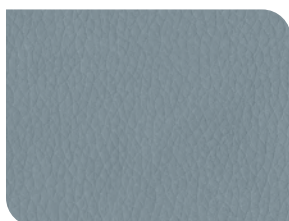
SAGE



THUNDER



TUSK



WILLIAMSBURG

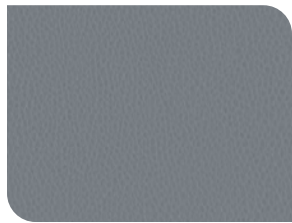
FIBER	100% Polyurethane		
BACKING	89% Polyester, 11% Rayon		
ABRASION	200,000 Double Rubs		
CLEANING CODE	W		
FLAMMABILITY	• CA Bulletin 117-2013	• UFAC Class 1	• NFPA 260 Class 1

Colors and patterns may differ from images. Samples available upon request.

Carson CV



Grade 8



AIRY



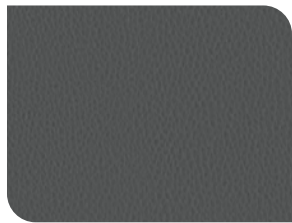
AZURE



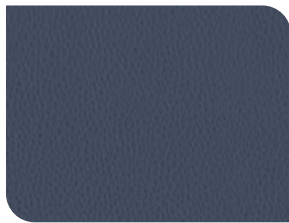
BUCK



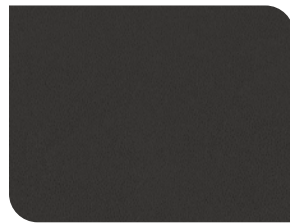
SAGE



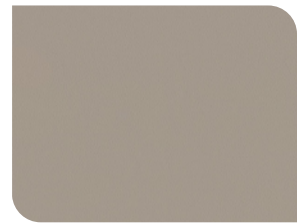
GRAPHITE



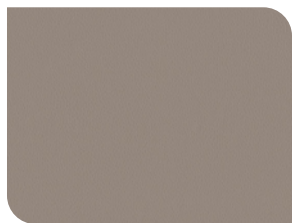
INDIGO



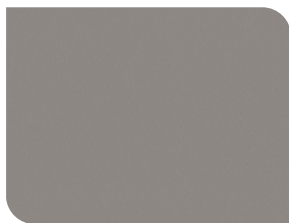
SHADOW



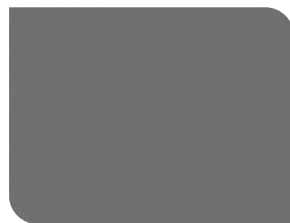
BLUFF



STONE



STERLING



FOG



ROAST

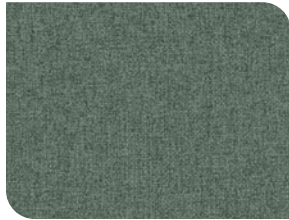
FIBER	100% Clean Vinyl / Phthalate-Free		
BACKING	Polyester		
ABRASION	500,000 Double Rubs		
CLEANING CODE	W		
FLAMMABILITY	• CA Bulletin 117-2013	• UFAC Class 1	• NFPA 260 Class 1
REDUCED ENVIRONMENTAL IMPACT	• GREENGUARD Certified	• NSF 336-Compliant	• Single Source Fiber Content

Colors and patterns may differ from images. Samples available upon request.

Ego



Grade 8



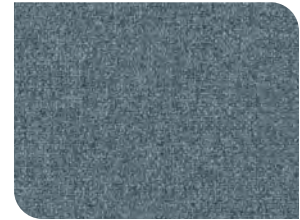
JADE



MIDNIGHT



ONYX



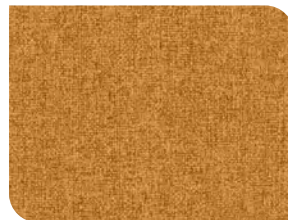
SPA



FOIL



GALENA



GINGER



DOVE



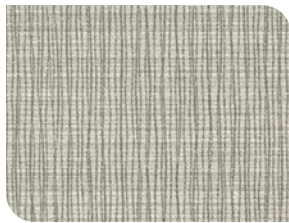
TWIG

FIBER	85% Polyester, 15% Viscose Rayon
BACKING	Acrylic
ABRASION	250,000 Double Rubs
CLEANING CODE	WS
FLAMMABILITY	• CA Bulletin 117-2013 • UFAC Class 1 • NFPA 260 Class 1 • ASTM E84
REDUCED ENVIRONMENTAL IMPACT	• GREENGUARD Certified • NSF 336-Compliant

Colors and patterns may differ from images. Samples available upon request.

Graph

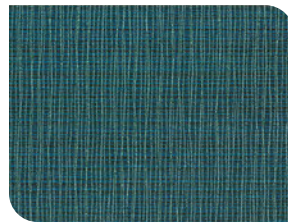
Grade 8



ALPINE



RUBY



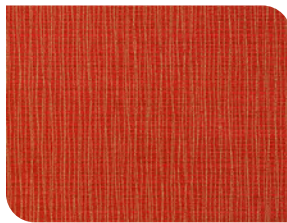
TIDAL



WAVE



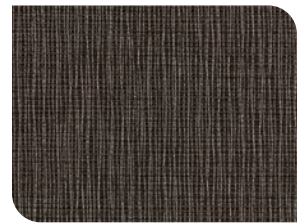
PARROT



POPPY



ALLOY



COAL



ANCHOR

FIBER	75% Repreve® Post-Consumer Recycled Polyester, 25% Polyester		
BACKING	Acrylic		
ABRASION	170,000 Double Rubs		
CLEANING CODE	W		
REPEAT	3-3/8" V, 7-1/2" H		
FLAMMABILITY	• CA Bulletin 117-2013	• UFAC Class 1	• NFPA 260 Class 1
REDUCED ENVIRONMENTAL IMPACT	• GREENGUARD Certified	• NSF 336-Compliant	• Recycled Fiber Content

Colors and patterns may differ from images. Samples available upon request.

Fuse



Grade 8



PRISTINE



SAFFRON



GINGER



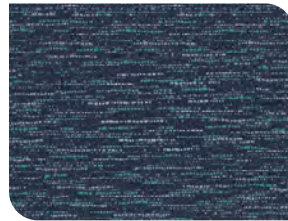
IRIS



CRESS



PEPPER



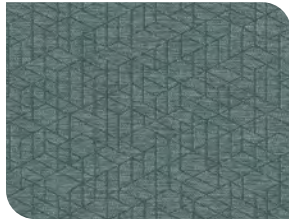
AZUREAN

FIBER	65% Post-Industrial Recycled Polyester, 35% Post-Consumer Recycled Polyester		
BACKING	Latex		
ABRASION	100,000 Double Rubs		
CLEANING CODE	WS		
FLAMMABILITY	• CA Bulletin 117-2013	• UFAC Class 1	• NFPA 260 Class 1
REDUCED ENVIRONMENTAL IMPACT	• GREENGUARD Certified	• NSF 336-Compliant	• Recycled Fiber Content

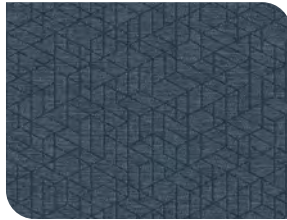
Colors and patterns may differ from images. Samples available upon request.

Blueprint

Grade 10



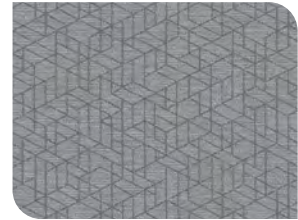
BASIL



DENIM



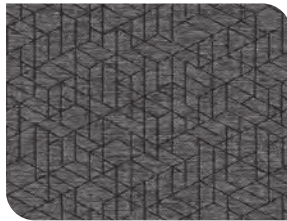
FLAME



FOG



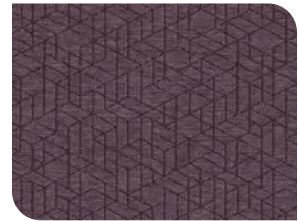
JET



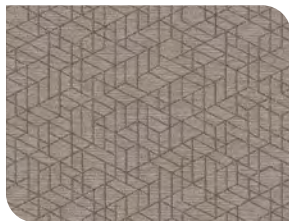
KOHL



NAVY



PLUM



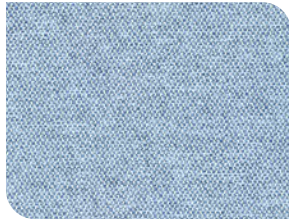
SANDY

FIBER	57% Recycled Polyester, 43% Polyester
BACKING	Acrylic
ABRASION	62,000 Double Rubs
CLEANING CODE	WS
REPEAT	5" V, 4-7/8" H
FLAMMABILITY	<ul style="list-style-type: none"> • CA Bulletin 117-2013 • UFAC Class 1 • NFPA 260 Class 1
REDUCED ENVIRONMENTAL IMPACT	<ul style="list-style-type: none"> • GREENGUARD Certified • NSF 336-Compliant • Recycled Fiber Content • Manufactured Without Heavy Metal Dyes

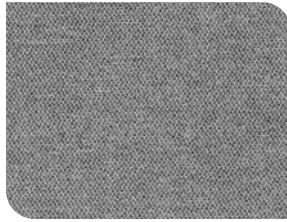
Colors and patterns may differ from images. Samples available upon request.

Infinity

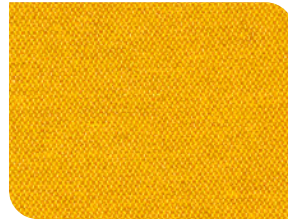
GRADE 10



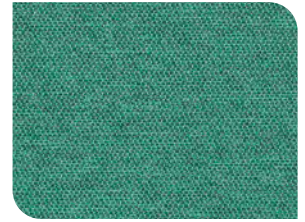
ASTER



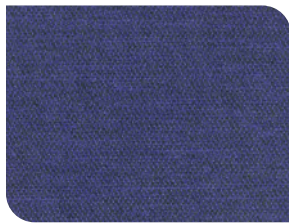
PEWTER



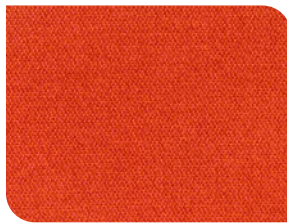
MAIZE



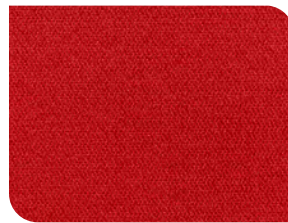
ATOLL



BEYOND



PAPAYA



MACINTOSH



VINE



JAVA

FIBER	74% Post-Consumer Recycled Polyester, 26% Polyester			
FINISH & BACKING	C-Zero® / Acrylic			
ABRASION	200,000 Double Rubs			
CLEANING CODE	WS			
REPEAT	1/8" V, 5/8" H			
FLAMMABILITY	• CA Bulletin 117-2013	• UFAC Class 1	• NFPA 260 Class 1	• ASTM E84
REDUCED ENVIRONMENTAL IMPACT	• GREENGUARD Certified	• NSF 336-Compliant	• Recycled Fiber Content	

Colors and patterns may differ from images. Samples available upon request.

Starfall

Grade 10



ARCTIC



COCOA



INDIGO



JET



JUNIPER



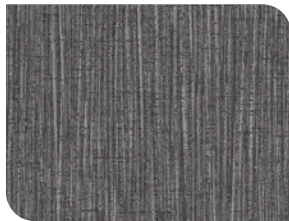
MARINA



PEPPER



RUBY



SHADOW



SMOKE



STEEL



TANGO



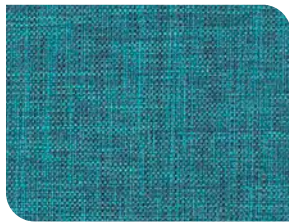
WHEAT

FIBER	61% Post-Consumer Recycled Polyester, 39% Polyester			
BACKING	Acrylic			
ABRASION	100,000 Double Rubs			
CLEANING CODE	WS			
REPEAT	14-3/4" V, 14-3/4" H			
FLAMMABILITY	• CA Bulletin 117-2013	• UFAC Class 1	• NFPA 260 Class 1	
REDUCED ENVIRONMENTAL IMPACT	• GREENGUARD Certified	• NSF 336-Compliant	• Recycled Fiber Content	• PVC-Free

Colors and patterns may differ from images. Samples available upon request.

Cover Cloth

GRADE 10



CYAN



FLAME



NAVEL



SORREL



BOUQUET



GRAPHITE



INDIGO



ANTIQUE



PLATINUM



JET



DELFT



OAT



FIBER	56% Repreve® Post-Consumer Recycled Polyester, 44% Polyester		
FINISH	Crypton®		
ABRASION	200,000 Double Rubs		
CLEANING CODE	W		
FLAMMABILITY	• CA Bulletin 117-2013	• UFAC Class 1	• NFPA 260 Class 1
REDUCED ENVIRONMENTAL IMPACT	• GREENGUARD Certified	• NSF 336-Compliant	

Colors and patterns may differ from images. Samples available upon request.

Cover Cloth

GRADE 10



SHIRE



TAUPE



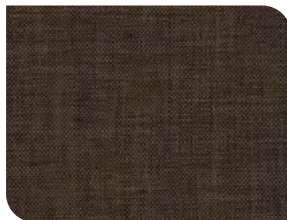
SAVOR



HEIRLOOM



FUCHSIA



COFFEE



ELECTRIC



VESSEL



VESPER



FIBER	56% Repreve® Post-Consumer Recycled Polyester, 44% Polyester		
FINISH	Crypton®		
ABRASION	200,000 Double Rubs		
CLEANING CODE	W		
FLAMMABILITY	• CA Bulletin 117-2013	• UFAC Class 1	• NFPA 260 Class 1
REDUCED ENVIRONMENTAL IMPACT	• GREENGUARD Certified	• NSF 336-Compliant	

Colors and patterns may differ from images. Samples available upon request.

Mingle

MAYERFABRICS

GRADE 10



STRAW



HAZE



LATTE



ALGAE



TURQUOISE



AQUA



INDIGO



CHARCOAL



PERSIMMON



ROUGE

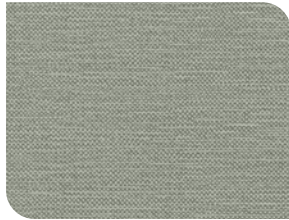
FIBER	80% Vinyl, 20% Polyester, Phthalate-Free Face
BACKING	Polyester
ABRASION	250,000 Double Rubs
CLEANING CODE	WS
FLAMMABILITY	• CA Bulletin 117-2013 • FMVSS 302 • UFAC Class 1 • NFPA 260 Class 1 • AB 2998-Compliant
REDUCED ENVIRONMENTAL IMPACT	• GREENGUARD Certified • Phthalate-Free • PFAS-Free

Colors and patterns may differ from images. Samples available upon request.

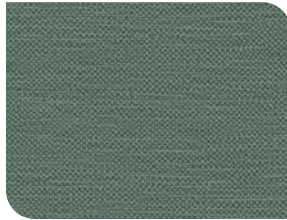
Native EPU



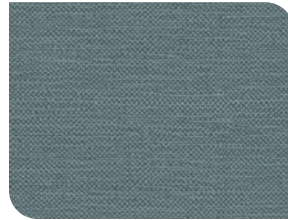
GRADE 12



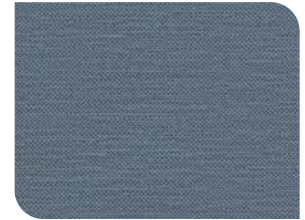
THYME



PINE



LAGOON



SOLSTICE



INDIGO



ALMOND



ROUGE

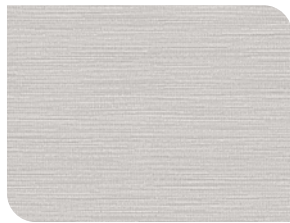
FIBER	100% EPU Polyurethane		
BACKING	Polyester		
ABRASION	130,000 Double Rubs		
CLEANING CODE	WS		
REPEAT	19-3/4" V, 19-1/2" H		
FLAMMABILITY	• CA Bulletin 117-2013	• UFAC Class 1	• NFPA 260 Class 1
REDUCED ENVIRONMENTAL IMPACT	• GREENGUARD Certified	• NSF 336-Compliant	• PVC-Free

Colors and patterns may differ from images. Samples available upon request.

Sanya CV



GRADE 12



ARCTIC



CLAY



CYPRUS



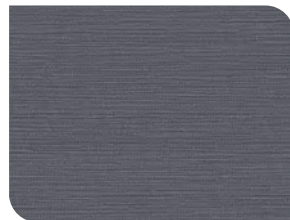
DUSK



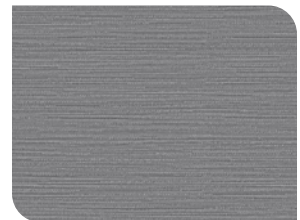
FERN



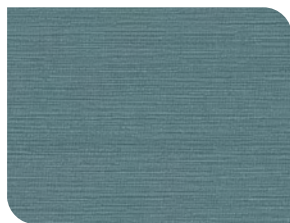
FLAX



IRON



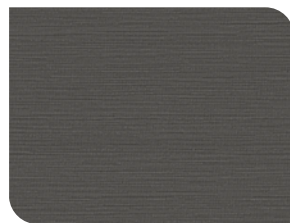
NICKEL



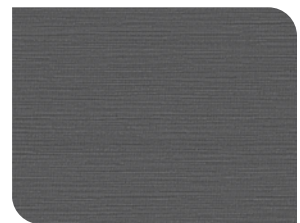
POOL



PUMICE



SABLE



SLATE



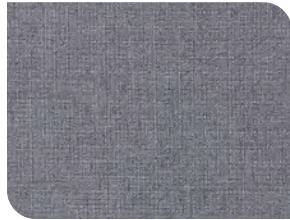
THISTLE

FIBER	100% Clean Vinyl / Phthalate-Free		
BACKING	Polyester		
ABRASION	220,000 Double Rubs		
CLEANING CODE	WS		
REPEAT	19" V, 14-3/4" H		
FLAMMABILITY	• CA Bulletin 117-2013	• UFAC Class 1	• NFPA 260 Class 1
REDUCED ENVIRONMENTAL IMPACT	• GREENGUARD Certified	• NSF 336-Compliant	

Colors and patterns may differ from images. Samples available upon request.

Flock

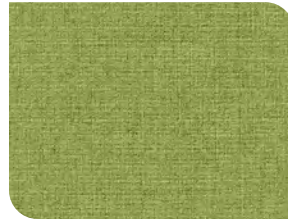
GRADE 12



NAUTICAL



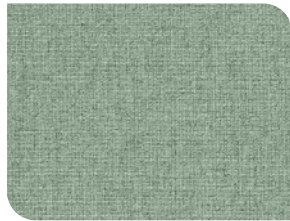
DEMURE



FERN



IVY



AGAVE



AMBER



BALTIC



CAYMAN



CROCUS



DUSK



FLANNEL



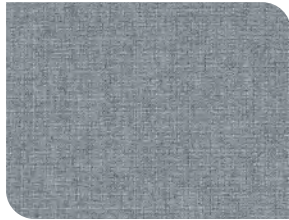
FLINT

FIBER	53% Recycled Polyester, 47% Polyester		
FINISH	Crypton Green®		
ABRASION	140,000 Double Rubs		
CLEANING CODE	W		
FLAMMABILITY	• CA Bulletin 117-2013	• UFAC Class 1	• NFPA 260 Class 1
REDUCED ENVIRONMENTAL IMPACT	• GREENGUARD Certified	• NSF 336-Compliant	• Recycled Fiber Content

Colors and patterns may differ from images. Samples available upon request.

Flock

GRADE 12



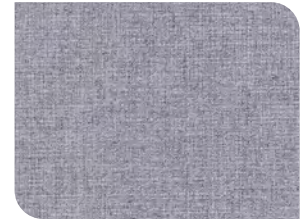
HARBOR



HARP



LAPIS



HEATHER



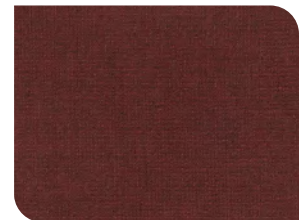
NETTLE



HEARTH



PAPRIKA



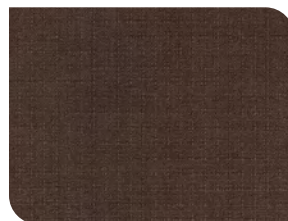
RUBY



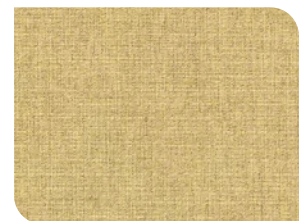
SURF



TWINE



WALNUT



WHEAT

FIBER	53% Recycled Polyester, 47% Polyester		
FINISH	Crypton Green®		
ABRASION	140,000 Double Rubs		
CLEANING CODE	W		
FLAMMABILITY	• CA Bulletin 117-2013	• UFAC Class 1	• NFPA 260 Class 1
REDUCED ENVIRONMENTAL IMPACT	• GREENGUARD Certified	• NSF 336-Compliant	• Recycled Fiber Content

Colors and patterns may differ from images. Samples available upon request.

Chime CV



GRADE 14



MADRAS



EARTHEN



MINERAL



REEF



BALI



PACIFIC



TANGO



PRALINE

FIBER	100% Clean Vinyl / Phthalate-Free	
BACKING	Polyester	
ABRASION	250,000 Double Rubs	
CLEANING CODE	WS	
REPEAT	6-3/4" V, 6" H	
FLAMMABILITY	<ul style="list-style-type: none"> • CA Bulletin 117-2013 • NFPA 260 Class 1 	<ul style="list-style-type: none"> • UFAC Class 1 • Passes IMO Part 8 With Proper Components
REDUCED ENVIRONMENTAL IMPACT	<ul style="list-style-type: none"> • GREENGUARD Certified 	<ul style="list-style-type: none"> • NSF 336-Compliant

Colors and patterns may differ from images. Samples available upon request.

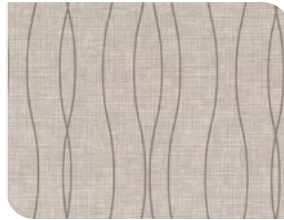
Lasanna CV



GRADE 14



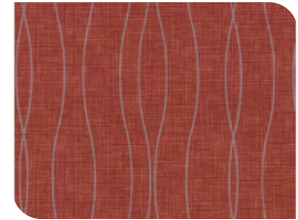
ZIRCON



PUMICE



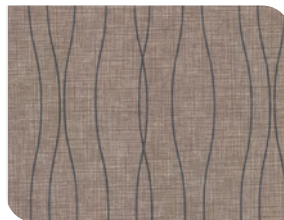
ANISE



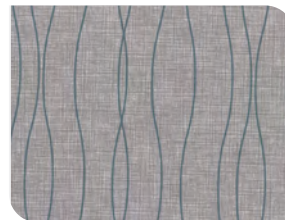
KOKANEE



ANTIQUÉ



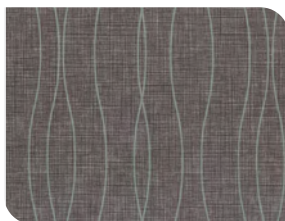
WREN



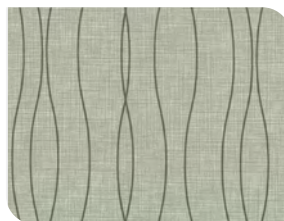
CASCADE



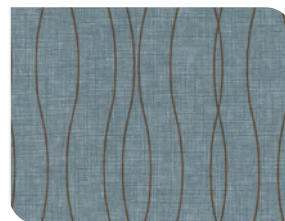
LAKESIDE



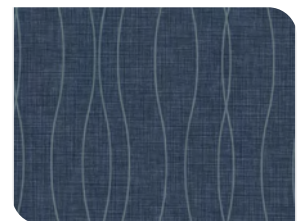
JETTY



ALOE



REFRESH



ATLANTIC

FIBER	100% Clean Vinyl / Phthalate-Free
BACKING	Polyester
ABRASION	200,000 Double Rubs
CLEANING CODE	WS
REPEAT	6" V, 5-3/4" H
FLAMMABILITY	<ul style="list-style-type: none"> • CA Bulletin 117-2013 • NFPA 260 Class 1 • UFAC Class 1 • Passes IMO Part 8 With Proper Components
REDUCED ENVIRONMENTAL IMPACT	• GREENGUARD Certified

Colors and patterns may differ from images. Samples available upon request.

Yarnplay CV



GRADE 14



CYPRUS



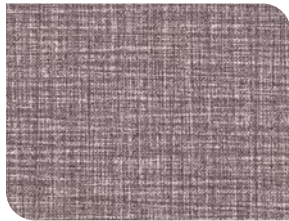
NETTLE



OOLONG



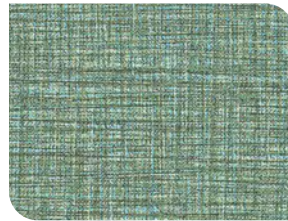
SAMARA



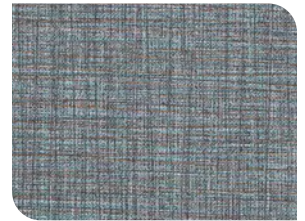
CASSIS



FLAX



BRIAR



BLUESTONE



PACIFIC

FIBER	100% Clean Vinyl / Phthalate-Free		
FINISH & BACKING	Protective Overcoat® & Polyester		
ABRASION	250,000 Double Rubs		
CLEANING CODE	WS		
REPEAT	14-1/4" V, 14-1/8" H		
FLAMMABILITY	• CA Bulletin 117-2013	• UFAC Class 1	• NFPA 260 Class 1
REDUCED ENVIRONMENTAL IMPACT	• GREENGUARD Certified		

Colors and patterns may differ from images. Samples available upon request.

Manufacturing Locations.

1 (800) 545-5575
housing@foliot.com

Canada

Saint-Jérôme

721 Boulevard Roland-Godard
Saint-Jérôme, Quebec
J7Y 4C1

Mirabel

12275 Rue Helen Bristol
Mirabel, Quebec
J7N 1C7

USA

Las Vegas

7000 Placid Street
Las Vegas, Nevada
89119

